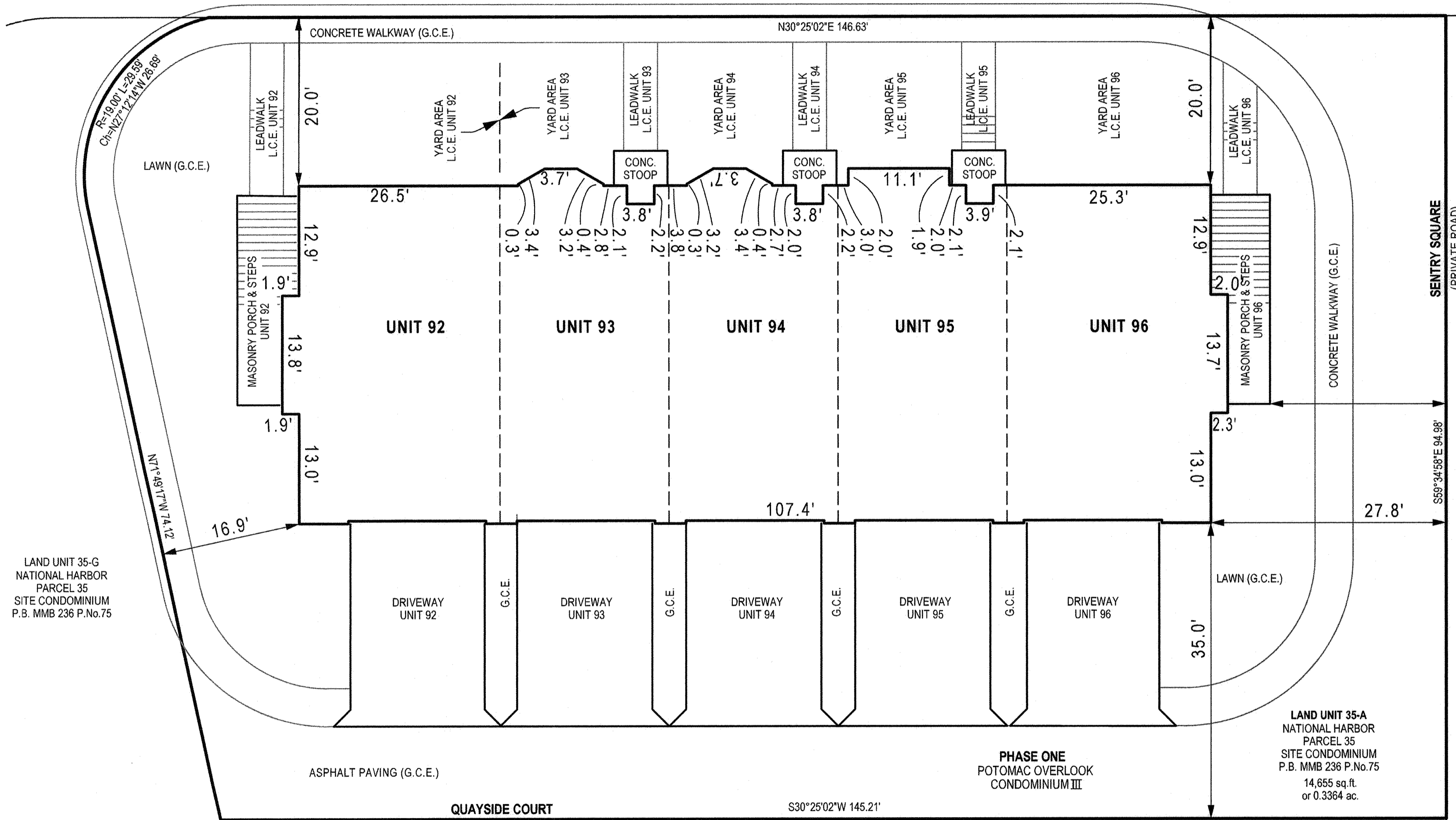


LAND UNIT 29-H
NATIONAL HARBOR
PARCEL 29
SITE CONDOMINIUM
P.B. MMB 234 P.No.50
(PRIVATE ROAD)



LAND UNIT 35-G
NATIONAL HARBOR
PARCEL 35
SITE CONDOMINIUM
P.B. MMB 236 P.No.75

LAND UNIT 35-C
NATIONAL HARBOR
PARCEL 35
SITE CONDOMINIUM
P.B. MMB 236 P.No.75

LAND UNIT 35-A
NATIONAL HARBOR
PARCEL 35
SITE CONDOMINIUM
P.B. MMB 236 P.No.75
14,655 sq.ft.
or 0.3364 ac.

PHASE ONE
POTOMAC OVERLOOK
CONDOMINIUM III

QUAYSIDE COURT
(PRIVATE ROAD)
S30°25'02"W 145.21'

LAND UNIT 35-B
NATIONAL HARBOR
PARCEL 35
SITE CONDOMINIUM
P.B. MMB 236 P.No.75

FILED
FEB 20 2013
CLERK OF THE CIRCUIT COURT
FOR PRINCE GEORGES COUNTY, MD.

CONDOMINIUM PLAT
SHEET 2 OF 4
**PHASE ONE
POTOMAC OVERLOOK
CONDOMINIUM III**
OXON HILL (12th) ELECTION DISTRICT
PRINCE GEORGE'S COUNTY, MARYLAND
SCALE 1" = 10' FEBRUARY 2013

LS Loiederman
Soltesz Associates, Inc.
LANHAM OFFICE
4300 Forbes Boulevard Suite 230 Lanham, MD 20706 t.301.794.7555 f.301.794.7656
Engineering Planning Surveying Environmental Sciences www.LSAssociates.net

- NOTES**
- 1) The dimensions given for the building shown hereon were measured along the exterior wall of the foundation.
 - 2) The driveway and concrete stoop or masonry porch serving each Unit is part of the Unit.
 - 3) Limited common elements are designated hereon as L.C.E.
 - 4) General common elements are designated hereon as G.C.E.
 - 5) Walkways, driveways, porches, and stoops are intended to be constructed in the areas shown on the approved site plan.

RECORDED 2/20/13
PLAT BOOK MMB237
PLAT NO. 65

PRINCE GEORGE'S COUNTY CIRCUIT COURT (Subdivision Plats, PG) 19-Book MMB 237, pp. 64-67 MSA S125018982 Date Available 2/20/2013 Printed 2/21/2013

S:\11005-01\plan\surv\Plat\potomac-overlook-condo-III\phase-01-sheet-2.sht Scale=10.0000 ft./in. User=jisaikel PLTdrv=LSA_Sht.plctfg PenBth=TEXT SUB.tbl 2/19/2013 1:50:23 PM

198300 MSA Ssu 1250 18982-2