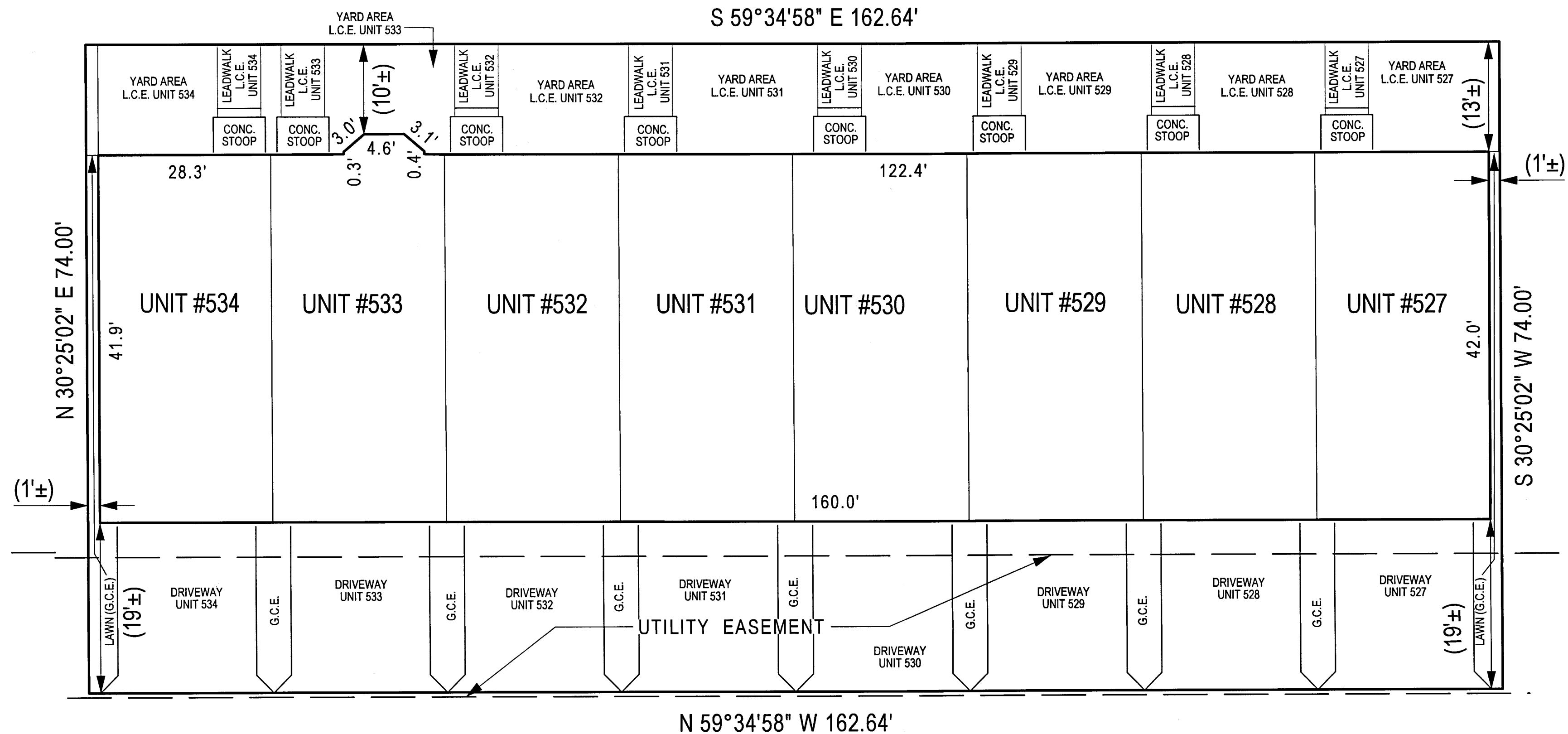


HARBOR PORT WAY PRIVATE ROAD

LAND UNIT 56-S



**LAND UNIT
56-N**
12,035 S.F.
0.2763 AC.

LAND UNIT 56-W

FILED

DEC 20 2022

CLERK OF THE CIRCUIT COURT
FOR PRINCE GEORGE'S COUNTY, MD

CONDOMINIUM PLAT
SHEET 2 OF 6
**PHASE SEVEN
POTOMAC OVERLOOK
CONDOMINIUM IX EAST**

OXON HILL (12th) ELECTION DISTRICT
PRINCE GEORGE'S COUNTY, MARYLAND
SCALE 1" = 10' NOVEMBER, 2022

 **SOLTESZ, LLC**

4300 Forbes Boulevard, Suite 230 Lanham, MD 20706 P.301.794.7555 F.301.794.7656
Engineering // Surveying // Planning // Environmental Sciences www.solteszco.com

NOTES

- 1) The dimensions given for the building shown hereon were measured along the exterior wall of the foundation.
- 2) The driveway, and masonry porch and steps serving each Unit are part of the Unit.
- 3) Limited common elements are designated hereon as L.C.E.
- 4) General common elements are designated hereon as G.C.E.
- 5) Walkways, driveways, porches, and stoops are intended to be constructed in the areas shown on the approved site plan.

RECORDED 12-20-2022
PLAT BOOK ME 262
PLAT NO. 88

2052 223

MSA 51250-2053-2

