

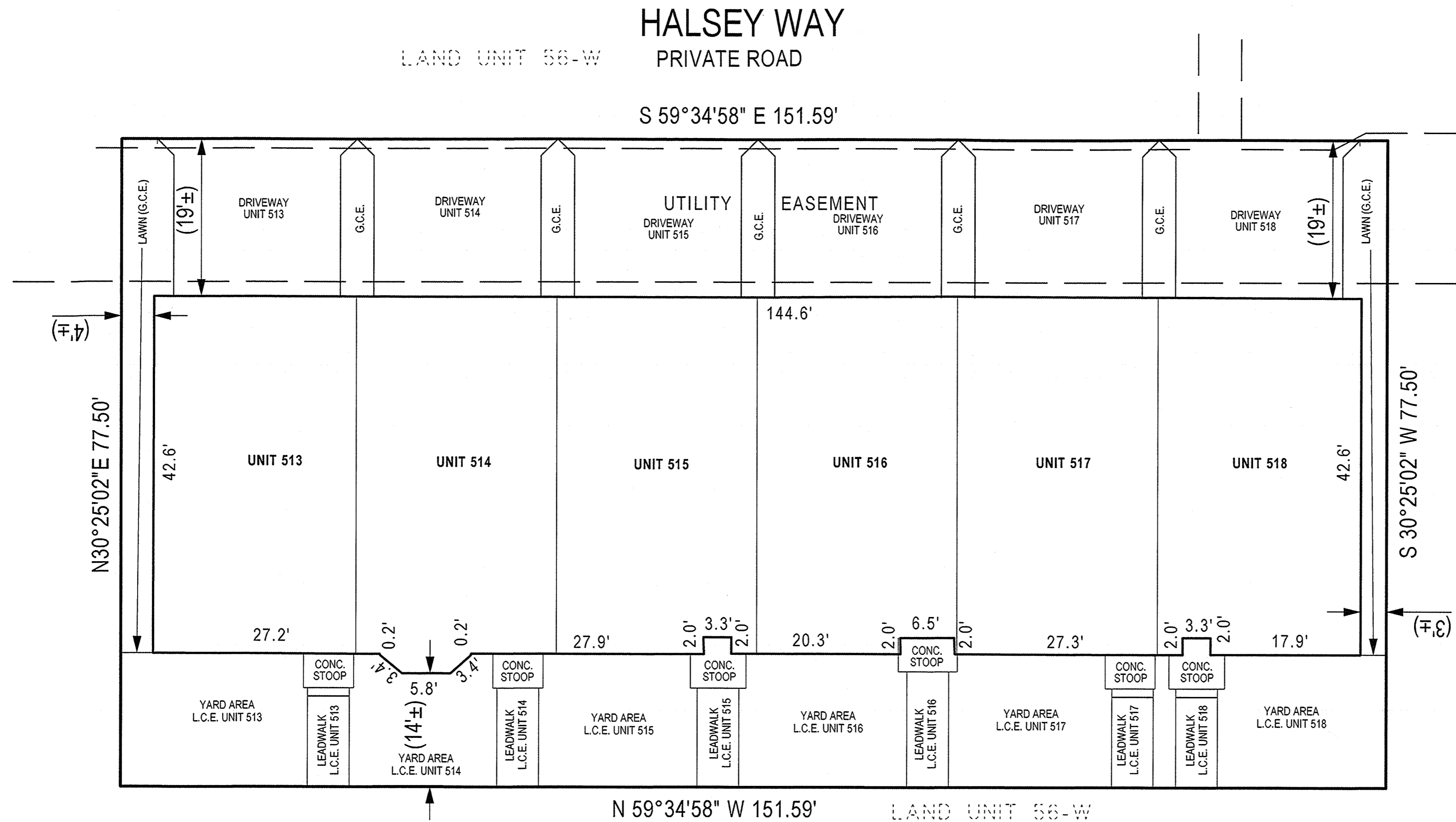
FILED

JUL 11 2022

CLERK OF THE CIRCUIT COURT  
FOR PRINCE GEORGE'S COUNTY, MD



SCALE: 1" = 10'  
MD ST-PLANE NAD 27



# LAND UNIT 56-K

11,748 S.F.  
0.2697 AC.

SECOND AMENDED  
CONDOMINIUM PLAT  
NATIONAL HARBOR  
PARCEL 56  
SITE CONDOMINIUM  
P.B. ME 255 P.No. 99

## CONDOMINIUM PLAT SHEET 2 OF 5 PHASE FIVE POTOMAC OVERLOOK CONDOMINIUM IX EAST

OXON HILL (12th) ELECTION DISTRICT  
PRINCE GEORGE'S COUNTY, MARYLAND  
SCALE 1" = 10' JUNE, 2022



4300 Forbes Boulevard, Suite 230 Lanham, MD 20706 P.301.794.7555 F.301.794.7656  
Engineering // Surveying // Planning // Environmental Sciences www.solteszco.com

### NOTES

- 1) The dimensions given for the building shown hereon were measured along the exterior wall of the foundation.
- 2) The driveway, and masonry porch and steps serving each Unit are part of the Unit.
- 3) Limited common elements are designated hereon as L.C.E.
- 4) General common elements are designated hereon as G.C.E.
- 5) Walkways, driveways, porches, and stoops are intended to be constructed in the areas shown on the approved site plan.

RECORDED 7-11-2022  
 PLAT BOOK ME 261  
 PLAT NO. 28

P250670

MSA C2381-20975-2