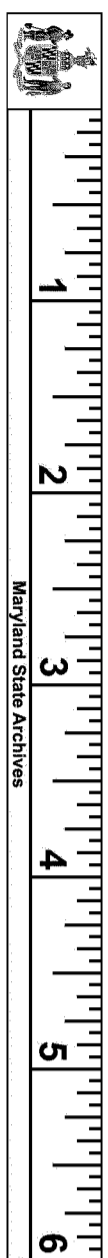
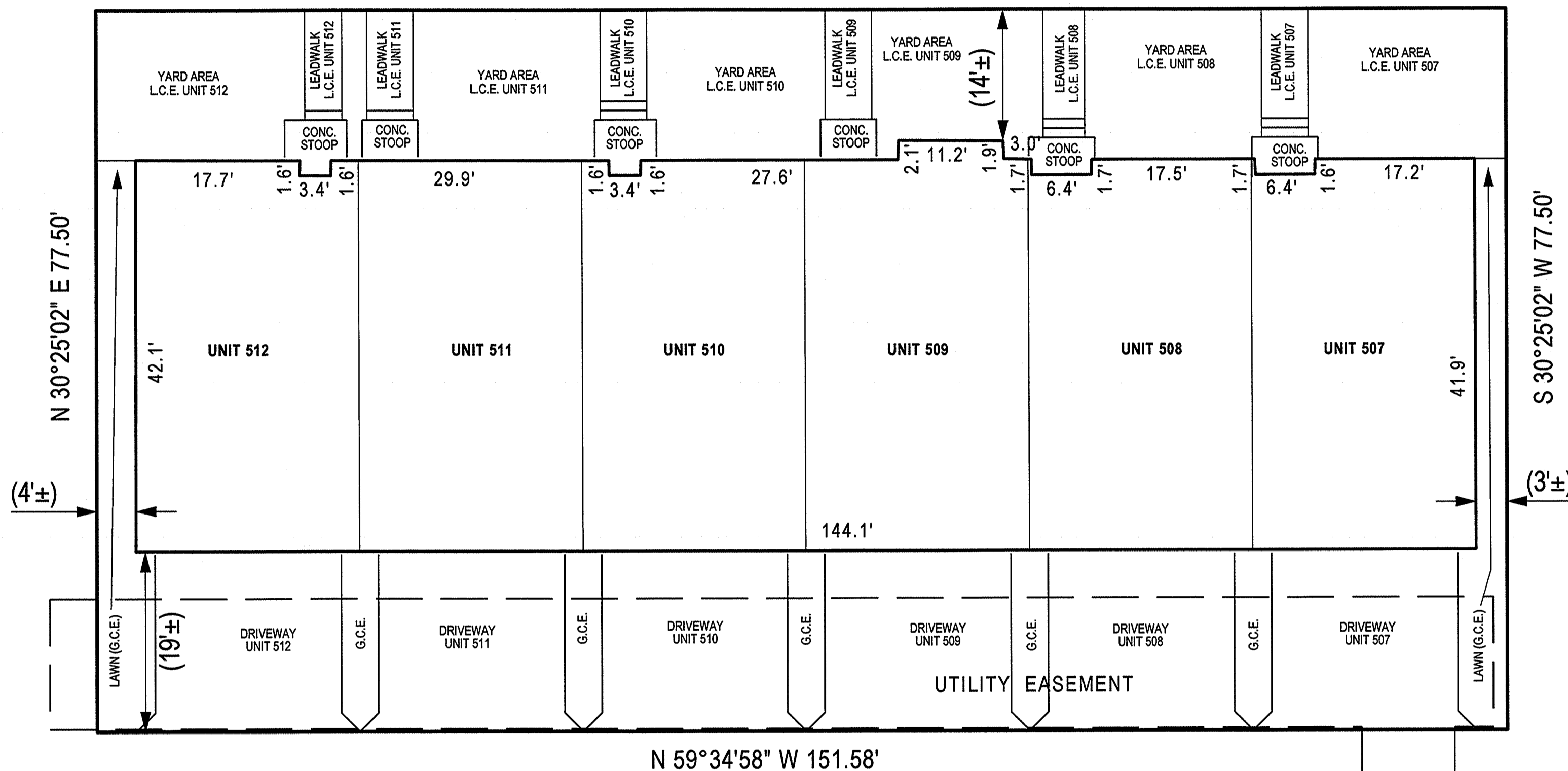


ME260-64



LAND UNIT 56-W

S 59°34'58" E 151.58'



# LAND UNIT 56-L

11,748 S.F.  
0.2697 AC.

SECOND AMENDED  
CONDOMINIUM PLAT  
NATIONAL HARBOR  
PARCEL 56  
SITE CONDOMINIUM  
P.B. ME 255 P.No. 99

FILED

APR 26 2022

CLERK OF THE CIRCUIT COURT  
FOR PRINCE GEORGE'S COUNTY, MD

## CONDOMINIUM PLAT SHEET 2 OF 5 PHASE FOUR POTOMAC OVERLOOK CONDOMINIUM EAST

OXON HILL (12th) ELECTION DISTRICT  
PRINCE GEORGE'S COUNTY, MARYLAND  
SCALE 1" = 10' MARCH, 2022



4300 Forbes Boulevard, Suite 230 Lanham, MD 20706 P.301.794.7555 F.301.794.7656  
Engineering // Surveying // Planning // Environmental Sciences www.solteszco.com

### NOTES

- 1) The dimensions given for the building shown hereon were measured along the exterior wall of the foundation.
- 2) The driveway, and masonry porch and steps serving each Unit are part of the Unit.
- 3) Limited common elements are designated hereon as L.C.E.
- 4) General common elements are designated hereon as G.C.E.
- 5) Walkways, driveways, porches, and stoops are intended to be constructed in the areas shown on the approved site plan.

RECORDED 04/26/2022  
PLAT BOOK ME260  
PLAT NO. 64

P247 745

MSA S1250-20458-2

6125616190