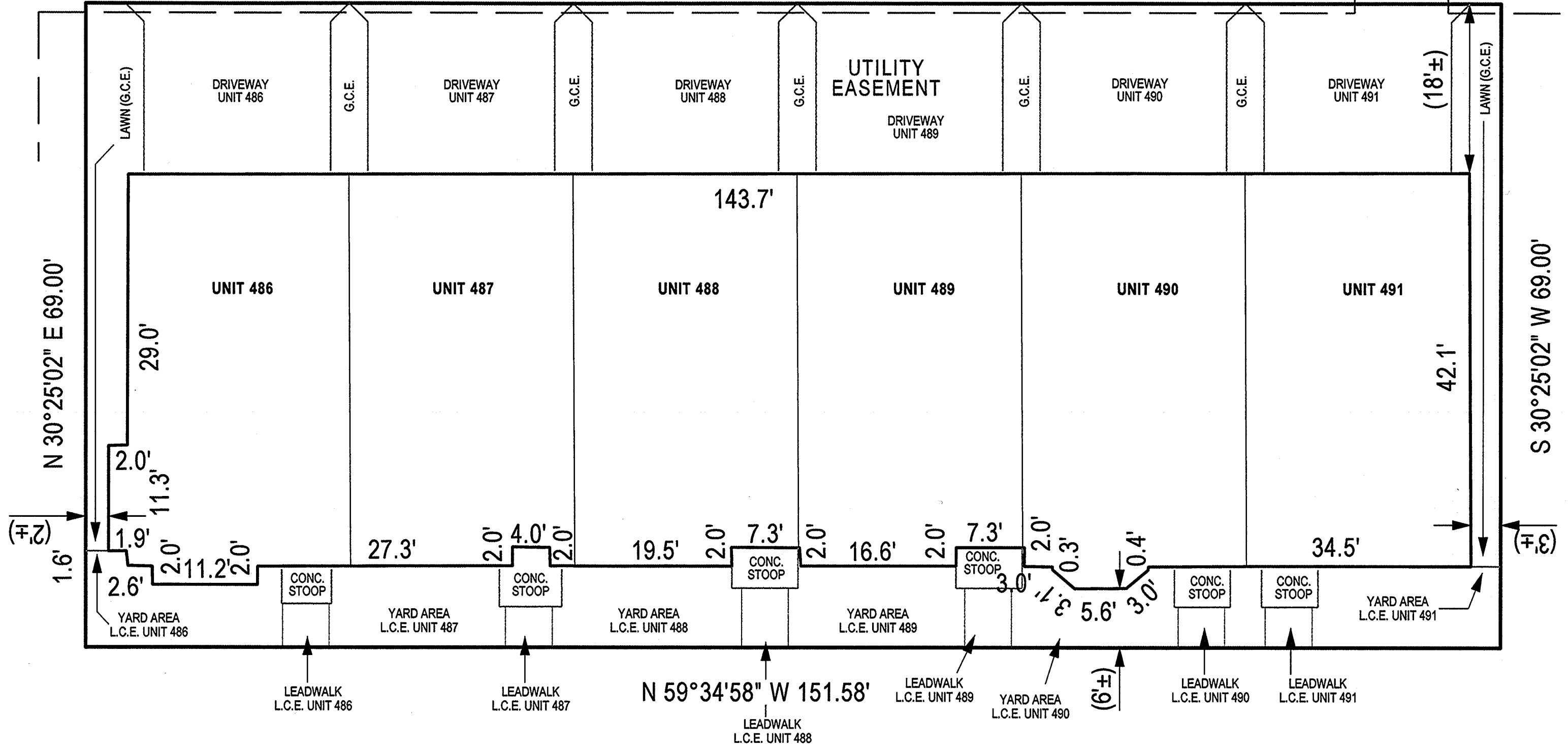
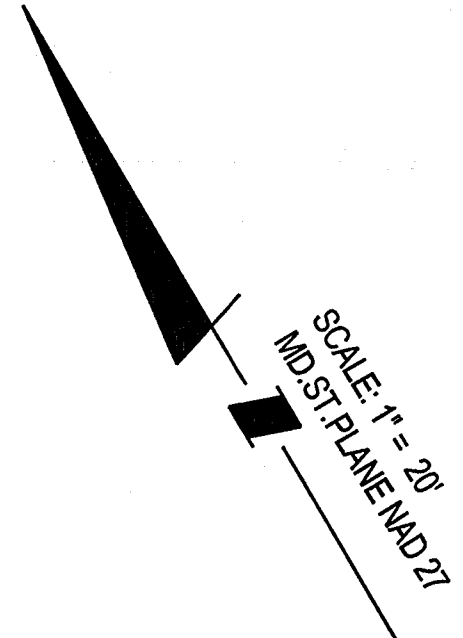


ME259 76



LEIGH WAY
PRIVATE ROAD
LAND UNIT 56-W
S 59°34'58" E 151.58'



FILED

JAN 31 2022

CLERK OF THE CIRCUIT COURT
FOR PRINCE GEORGE'S COUNTY, MD

LAND UNIT 56-W
LAND UNIT 56-M
10,459 S.F.
0.2401 AC.
SECOND AMENDED
CONDOMINIUM PLAT
NATIONAL HARBOR
PARCEL 56
SITE CONDOMINIUM
P.B. ME 255 P.No. 99

CONDOMINIUM PLAT
SHEET 2 OF 5
PHASE TWO
POTOMAC OVERLOOK
CONDOMINIUM IX EAST

OXON HILL (12th) ELECTION DISTRICT
PRINCE GEORGE'S COUNTY, MARYLAND
SCALE 1" = 10' JANUARY, 2022



4300 Forbes Boulevard, Suite 230 Lanham, MD 20706 P.301.794.7555 F.301.794.7656
Engineering // Surveying // Planning // Environmental Sciences www.solteszco.com

- NOTES**
- 1) The dimensions given for the building shown hereon were measured along the exterior wall of the foundation.
 - 2) The driveway, and masonry porch and steps serving each Unit are part of the Unit.
 - 3) Limited common elements are designated hereon as L.C.E.
 - 4) General common elements are designated hereon as G.C.E.
 - 5) Walkways, driveways, porches, and stoops are intended to be constructed in the areas shown on the approved site plan.

RECORDED 11/31/2022
PLAT BOOK ME259
PLAT NO. 86

P246309

MSA S1250-20416-2

PRINCE GEORGE'S COUNTY CIRCUIT COURT (Subdivision Plats, PG) Plat Book ME 259, p. 85-89, MSA_S1250_20416. Date available 2022/01/31. Printed 02/01/2023.

S:\1006-01\UPLANDS_PHASE2\SURVEY\Plats\Phase_2\sheet2.dwg Scale= 10.0000 ft / in. User= C:\vallos PLT.dwg PDF_Gray_150.plt cty Penrib= TEXT SUBJ:th 1/25/2022 12:27:45 PM