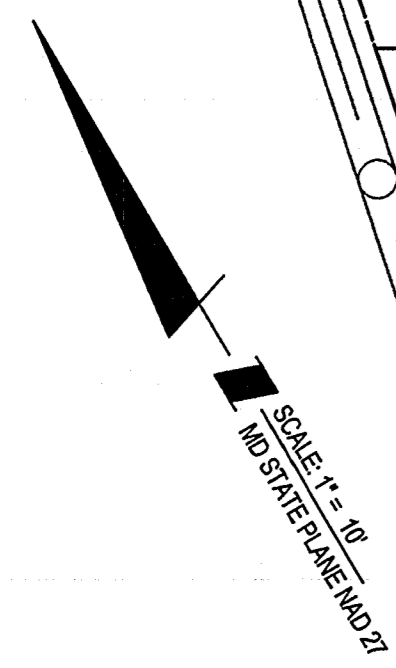
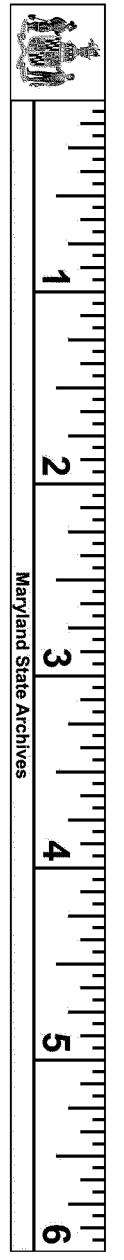


N/F
POTOMAC VISTA
L. 11279 f. 06



SCALE: 1" = 10'
MD STATE PLANE NAD 27

LAND UNIT
56-R

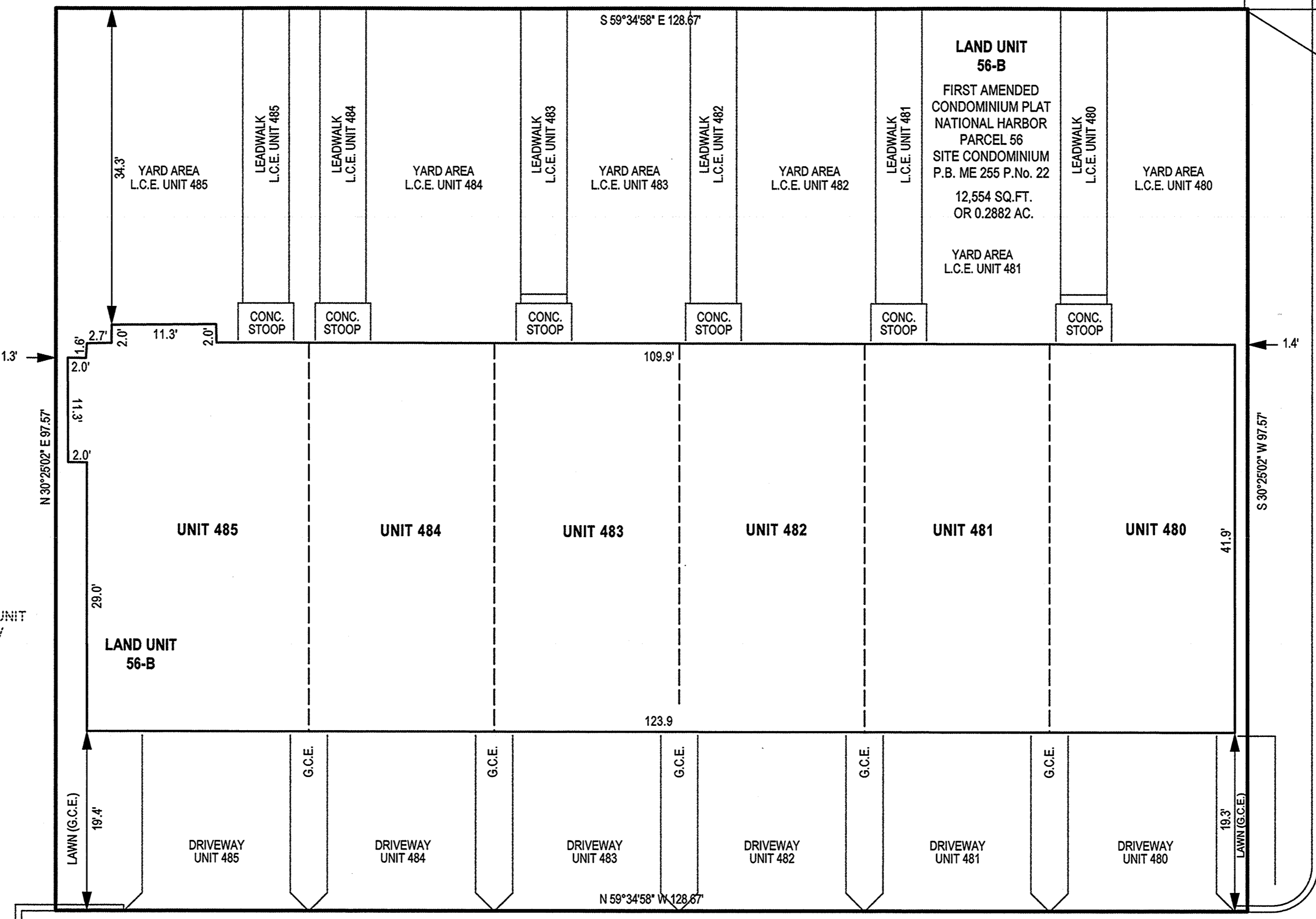
LAND UNIT
56-V

LAND UNIT
56-V

CONCRETE WALKWAY

HARBOR PORT WAY
(PRIVATE ROAD)

ASPHALT PAVING



PARCEL 56
PLAT 28
NATIONAL HARBOR
P.B. ME 252 P.N.G.21

ASPHALT PAVING

TRIGGERFISH DRIVE
(PRIVATE ROAD)

LAND UNIT
56-C

FILED
NOV 12 2020

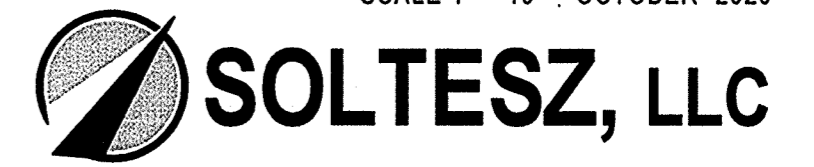
CLERK OF THE CIRCUIT COURT
FOR PRINCE GEORGE'S COUNTY, MD

RECORDED 11-12-2020
PLAT BOOK ME 255
PLAT NO. 39

NOTES

- 1) The dimensions given for the building shown hereon were measured along the exterior wall of the foundation.
- 2) The driveway, and masonry porch and steps serving each Unit are part of the Unit.
- 3) Limited common elements are designated hereon as L.C.E.
- 4) General common elements are designated hereon as G.C.E.
- 5) Walkways, driveways, porches, and stoops are intended to be constructed in the areas shown on the approved site plan.

CONDOMINIUM PLAT
SHEET 2 OF 5
PHASE ONE
POTOMAC OVERLOOK
CONDOMINIUM IX
OXON HILL (12th) ELECTION DISTRICT
PRINCE GEORGE'S COUNTY, MARYLAND
SCALE 1" = 10' . OCTOBER 2020



4300 Forbes Boulevard, Suite 230 Lanham, MD 20706 P.301.794.7555 F.301.794.7656
Engineering // Surveying // Planning // Environmental Sciences www.solteszco.com

P239 341

MSA C2381-20606-2