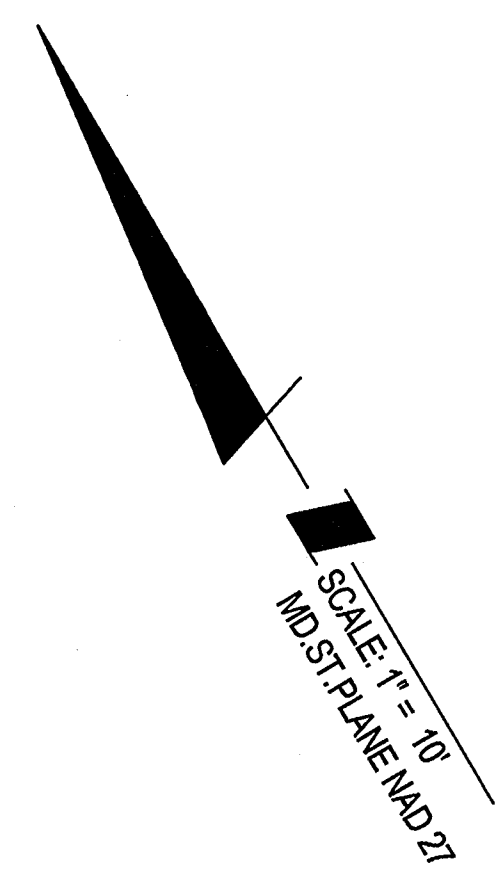
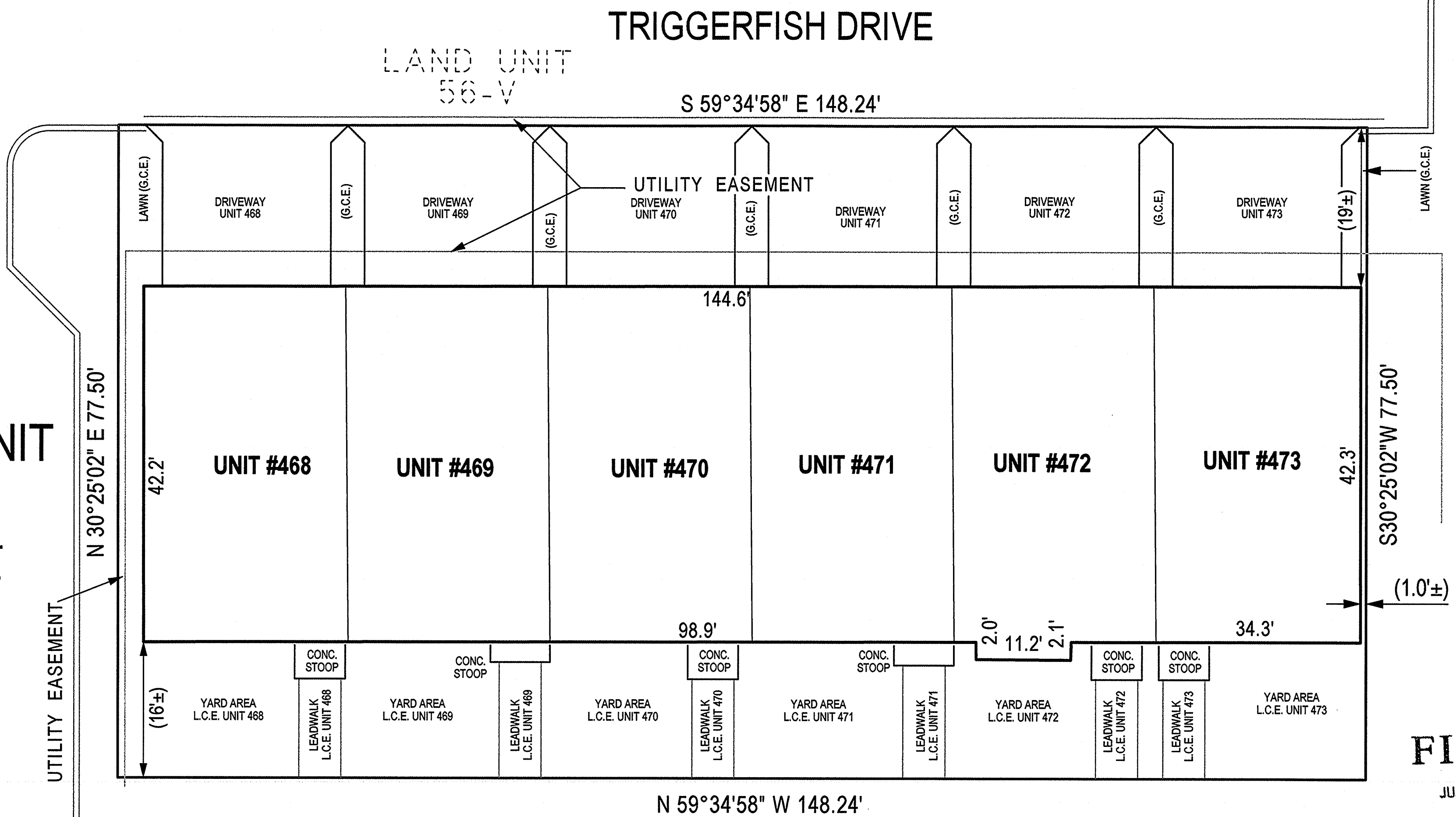


ME257-60



LAND UNIT 56-G  
11,489 S.F.  
0.2637 AC.



FILED

JUN 03 2021

CLERK OF THE CIRCUIT COURT FOR PRINCE GEORGE'S COUNTY, MD

CONDOMINIUM PLAT  
SHEET 2 OF 5  
PHASE FOUR  
POTOMAC OVERLOOK  
CONDOMINIUM IX  
OXON HILL (12th) ELECTION DISTRICT  
PRINCE GEORGE'S COUNTY, MARYLAND  
SCALE 1" = 10' MAY, 2021



4300 Forbes Boulevard, Suite 230 Lanham, MD 20706 P.301.794.7555 F.301.794.7656  
Engineering // Surveying // Planning // Environmental Sciences www.solteszco.com

- NOTES
- 1) The dimensions given for the building shown hereon were measured along the exterior wall of the foundation.
  - 2) The driveway, and masonry porch and steps serving each Unit are part of the Unit.
  - 3) Limited common elements are designated hereon as L.C.E.
  - 4) General common elements are designated hereon as G.C.E.
  - 5) Walkways, driveways, porches, and stoops are intended to be constructed in the areas shown on the approved site plan.

RECORDED 6/3/2021  
PLAT BOOK ME257  
PLAT NO. 60

PA212084

MSA 51250 - 20274 - 2

PRINCE GEORGE'S COUNTY CIRCUIT COURT (Subdivision Plats, PG) Plat Book ME 257, pp. 59-63, MSA\_51250\_20274. Date available 2021/06/03. Printed 02/01/2023.

S:\1006-01\PLANDS\_SURVEY\PlatPhase\_9\_Condo\_platphase-04-sheet-2.sht Scale= 10,000 ft / in. User= jsankel PLTdrv= Special\pfig Pemb= TEXT SUB.tbl 5/24/2021 1:44:40 PM 08/19/2021