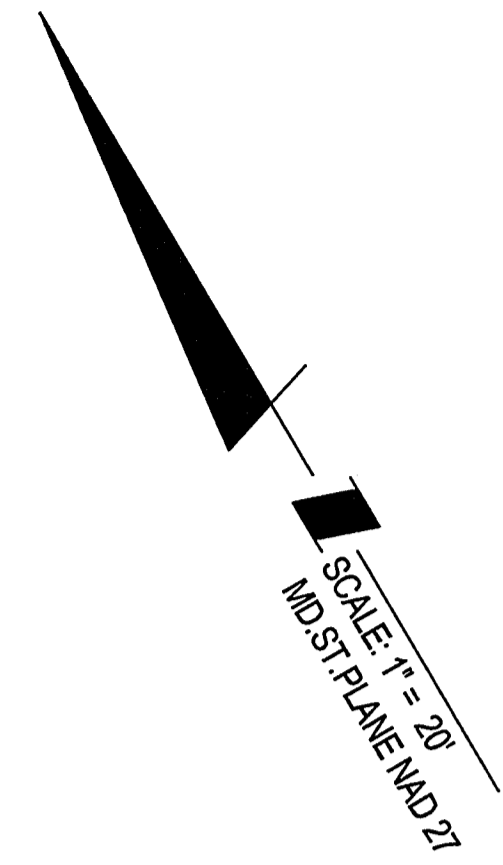
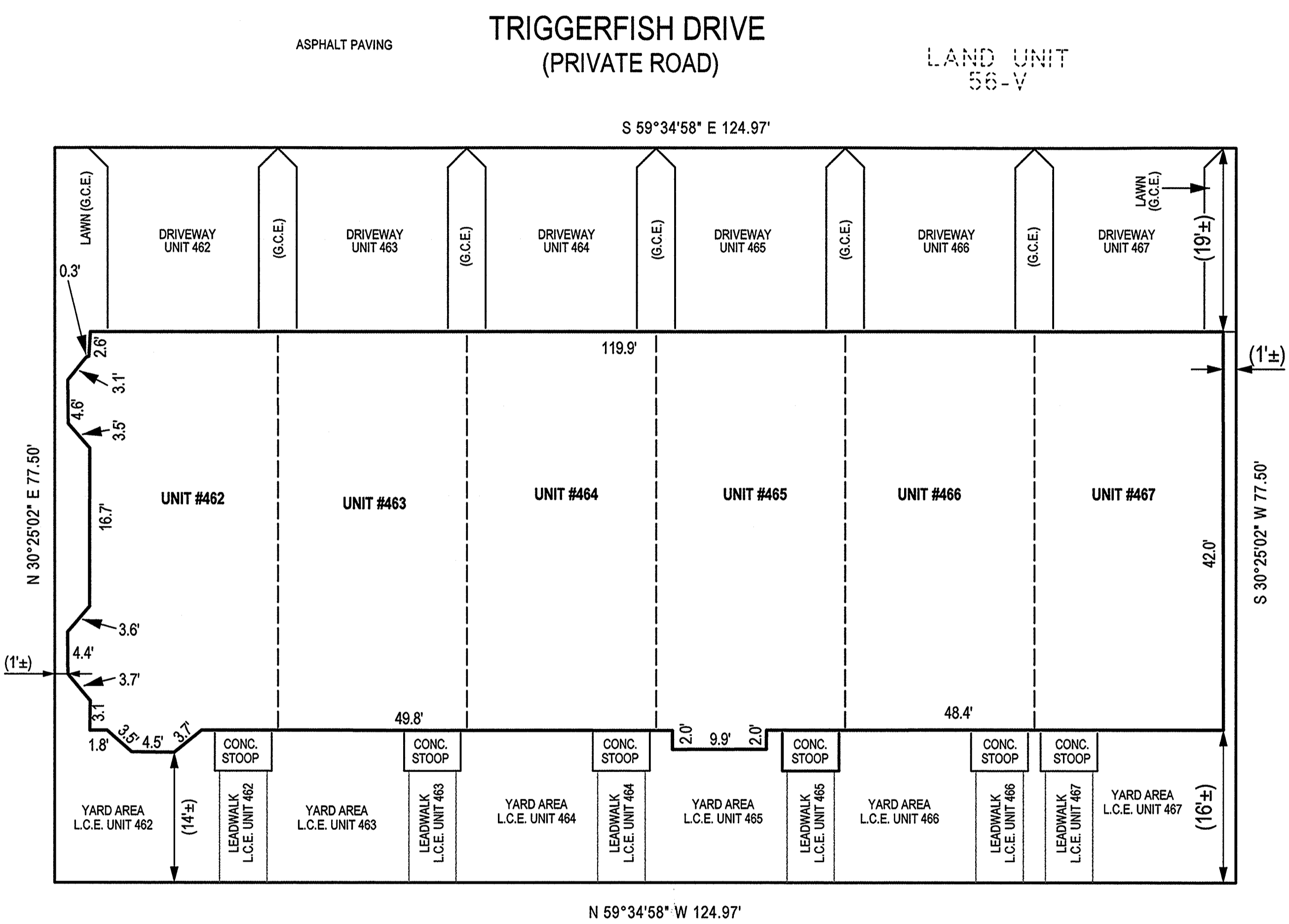


ME257-19



LAND UNIT 56-C
 SECOND AMENDED CONDOMINIUM PLAT
 NATIONAL HARBOR PARCEL 56
 SITE CONDOMINIUM
 P.B. ME 255 P.No. 99
 9,685 S.F.
 0.2223 AC.



NOTES

- 1) The dimensions given for the building shown hereon were measured along the exterior wall of the foundation.
- 2) The driveway, and masonry porch and steps serving each Unit are part of the Unit.
- 3) Limited common elements are designated hereon as L.C.E.
- 4) General common elements are designated hereon as G.C.E.
- 5) Walkways, driveways, porches, and stoops are intended to be constructed in the areas shown on the approved site plan.

RECORDED 5-5-2021
 PLAT BOOK ME257
 PLAT NO. 19

FILED
 MAY 05 2021

CLERK OF THE CIRCUIT COURT
 FOR PRINCE GEORGE'S COUNTY, MD

CONDOMINIUM PLAT
 SHEET 2 OF 5
PHASE THREE
POTOMAC OVERLOOK
CONDOMINIUM IX
 OXON HILL (12th) ELECTION DISTRICT
 PRINCE GEORGE'S COUNTY, MARYLAND
 SCALE 1" = 10' APRIL, 2021

 **SOLTESZ, LLC**

4300 Forbes Boulevard, Suite 230 Lanham, MD 20706 P.301.794.7555 F.301.794.7656
 Engineering // Surveying // Planning // Environmental Sciences
 www.solteszco.com

P242473

MSA C2381-20717-2

S:\1006-01\PLANDS_PHASE3\SURVEY\PlatPhase_9_Condo_plat\phase-03-sheet-2.shx Scale= 10.0000 ft./in. User= P\kubie\PLT\drv= Grey\p\ldg Pentbl= TEXT SUB.tbl 4/26/2021 10:54:06 AM