

MARINA VIEW WAY

LAND UNIT 56-V

LAND UNIT 56-H  
11,497 S.F.  
0.2639 AC.

FILED

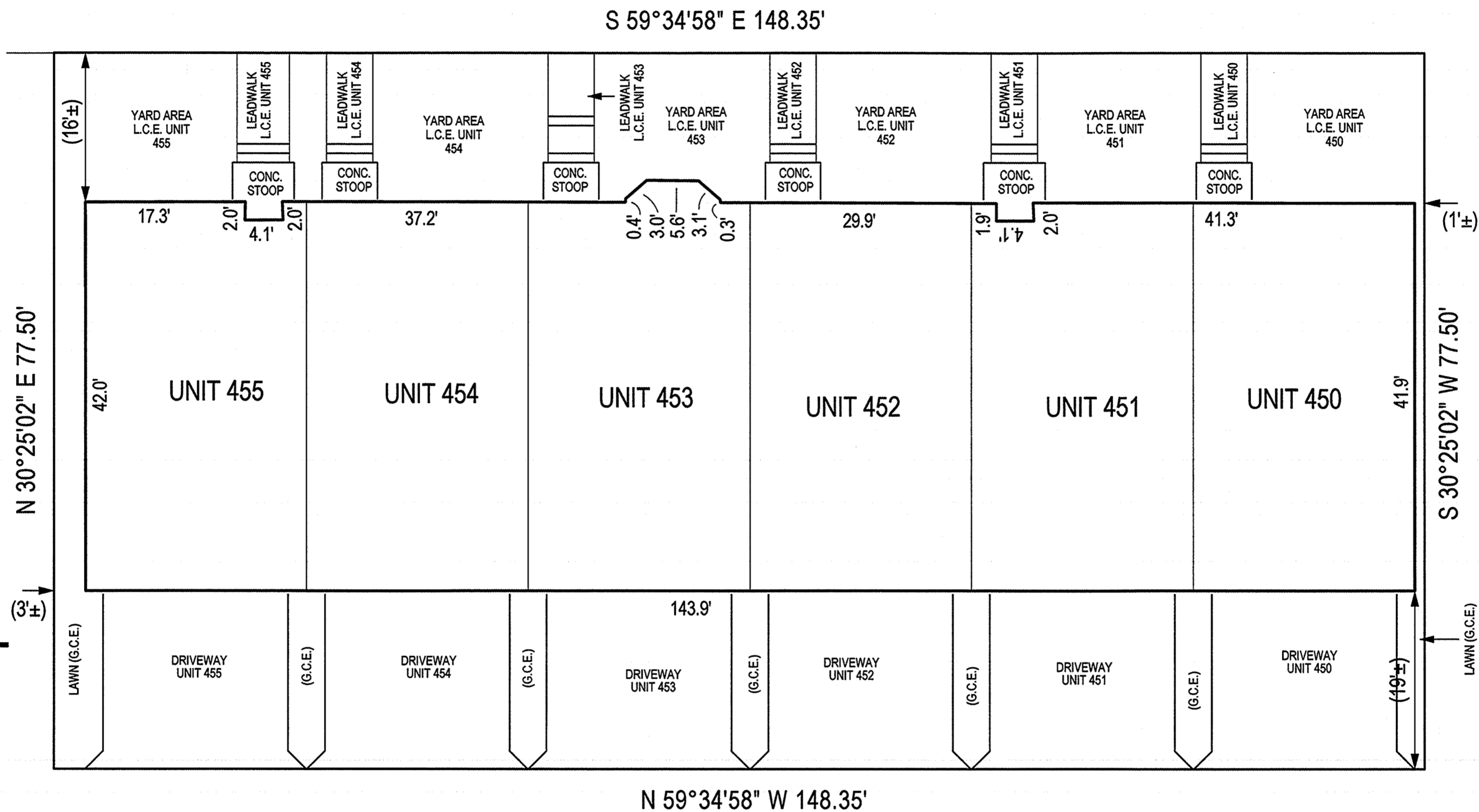
OCT 12 2021

CLERK OF THE CIRCUIT COURT  
FOR PRINCE GEORGE'S COUNTY, MD

RECORDED 10-12-2021  
PLAT BOOK ME 258  
PLAT NO. 74

NOTES

- 1) The dimensions given for the building shown hereon were measured along the exterior wall of the foundation.
- 2) The driveway, and masonry porch and steps serving each Unit are part of the Unit.
- 3) Limited common elements are designated hereon as L.C.E.
- 4) General common elements are designated hereon as G.C.E.
- 5) Walkways, driveways, porches, and stoops are intended to be constructed in the areas shown on the approved site plan.



WINDBOARD WAY

REEF DRIVE

LAND UNIT 56-V

CONDOMINIUM PLAT  
SHEET 2 OF 5  
PHASE SEVEN  
POTOMAC OVERLOOK  
CONDOMINIUM IX

OXON HILL (12th) ELECTION DISTRICT  
PRINCE GEORGE'S COUNTY, MARYLAND  
SCALE 1" = 10' OCTOBER, 2021



4300 Forbes Boulevard, Suite 230 Lanham, MD 20706 P.301.794.7555 F.301.794.7656  
Engineering // Surveying // Planning // Environmental Sciences www.solteszco.com

P244 249

MSA C2381-20218-2