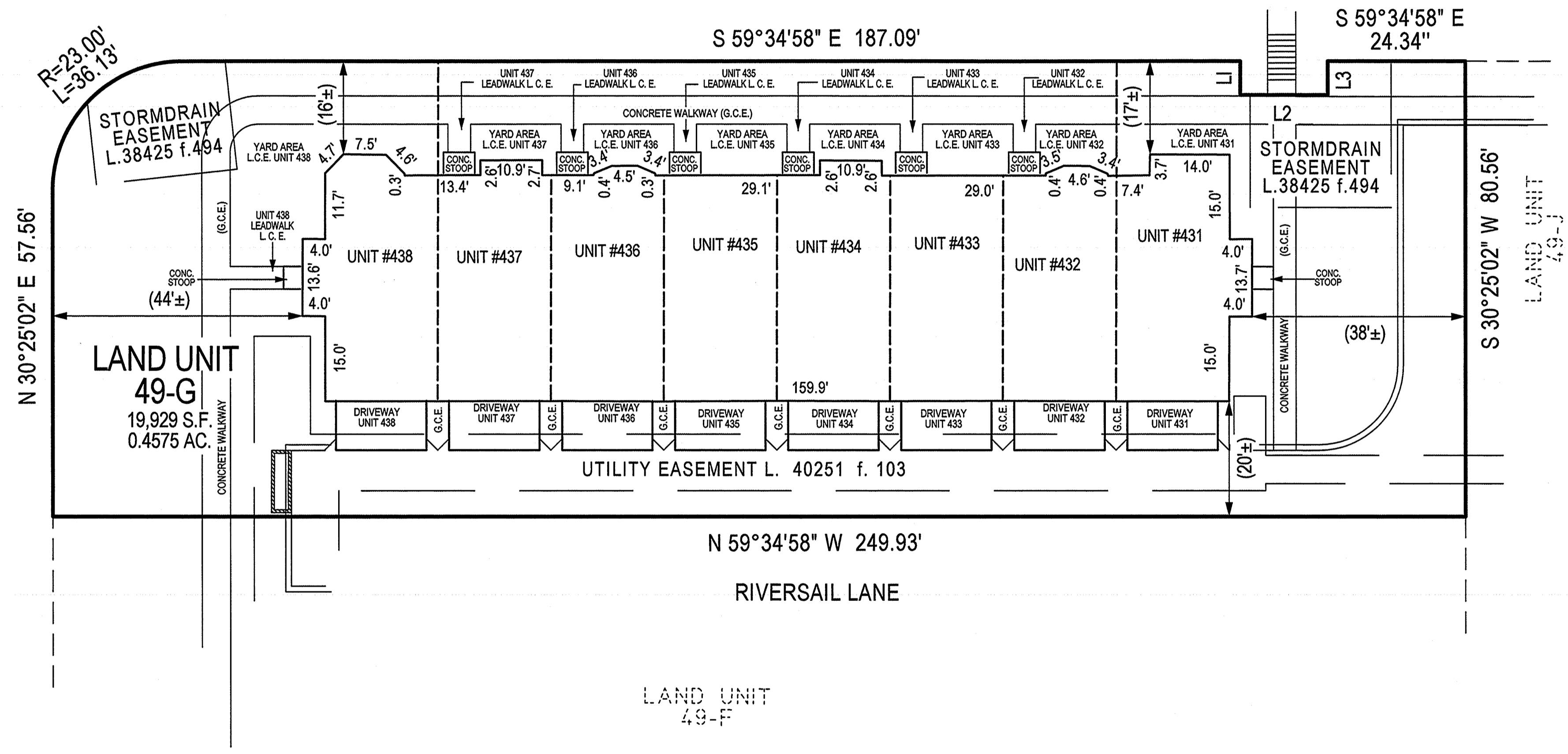




LINE TABLE

L1	S 30° 25' 02" W 6.00'
L2	S 59° 34' 58" E 15.50'
L3	N 30° 25' 02" E 6.00'



NOTES

- 1) The dimensions given for the building shown hereon were measured along the exterior wall of the foundation.
- 2) The driveway, and masonry porch and steps serving each Unit are part of the Unit.
- 3) Limited common elements are designated hereon as L.C.E.
- 4) General common elements are designated hereon as G.C.E.
- 5) Walkways, driveways, porches, and stoops are intended to be constructed in the areas shown on the approved site plan.

FILED

OCT - 7 2019

CLERK OF THE DISTRICT COURT FOR PRINCE GEORGE'S COUNTY, MD

RECORDED 10-7-19  
 PLAT BOOK ME252  
 PLAT NO. 89

CONDOMINIUM PLAT  
 SHEET 2 OF 6  
 PHASE EIGHT  
 POTOMAC OVERLOOK  
 CONDOMINIUM VIII

OXON HILL (12th) ELECTION DISTRICT  
 PRINCE GEORGE'S COUNTY, MARYLAND  
 SCALE 1" = 15' SEPTEMBER, 2019



4300 Forbes Boulevard, Suite 230 Lanham, MD 20706 P.301.794.7555 F.301.794.7656  
 Engineering // Surveying // Planning // Environmental Sciences www.solteszco.com