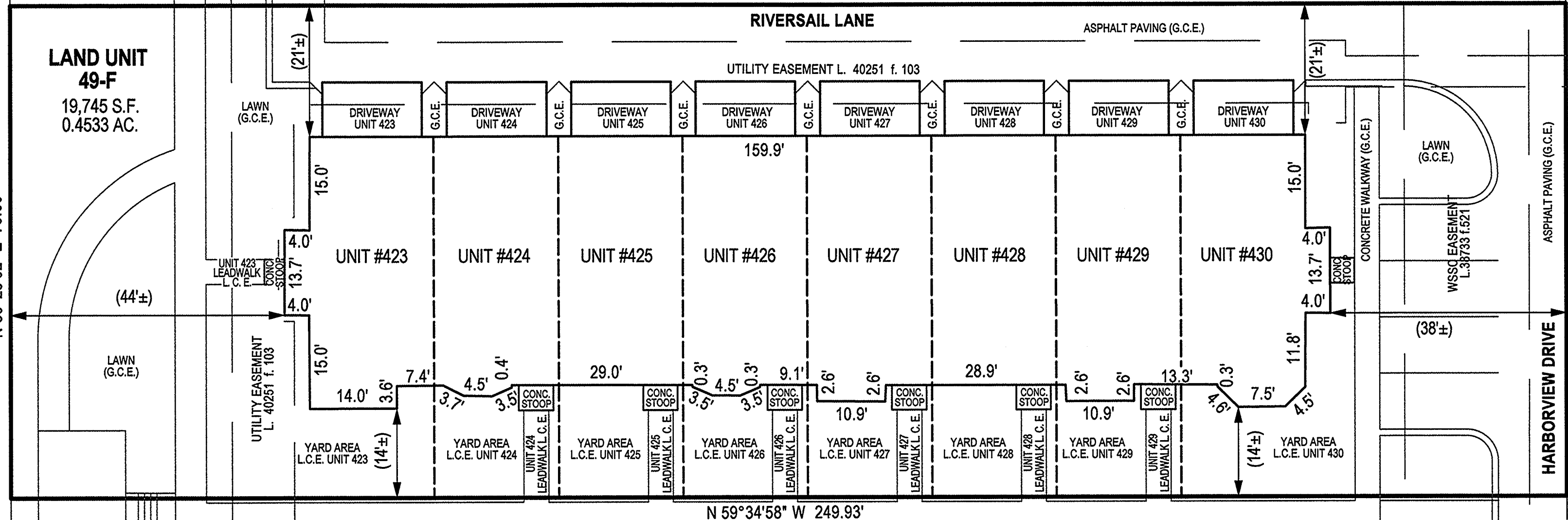


SCALE: 1" = 15'
MD ST. PLANE 14D.27

N/F NATIONAL HARBOR WATERFRONT L.C.
L. 13822 f. 256

N 30°25'02" E 79.00'



LAND UNIT 49-G
S 59°34'58" E 249.93'
RIVERSAIL LANE
ASPHALT PAVING (G.C.E.)
UTILITY EASEMENT L. 40251 f. 103
UNIT #423 UNIT #424 UNIT #425 UNIT #426 UNIT #427 UNIT #428 UNIT #429 UNIT #430
DRIVEWAY UNIT 423 DRIVEWAY UNIT 424 DRIVEWAY UNIT 425 DRIVEWAY UNIT 426 DRIVEWAY UNIT 427 DRIVEWAY UNIT 428 DRIVEWAY UNIT 429 DRIVEWAY UNIT 430
LAWN (G.C.E.)
CONCRETE WALKWAY (G.C.E.)
WSS EASEMENT L. 39133 f. 321
ASPHALT PAVING (G.C.E.)
HARBORVIEW DRIVE
S 30°25'02" W 79.00'
LAND UNIT 49-J

FILED

JUL 10 2019

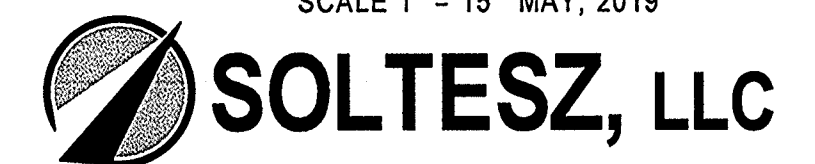
CLERK OF THE CIRCUIT COURT
FOR PRINCE GEORGE'S COUNTY, MD

NOTES

- 1) The dimensions given for the building shown hereon were measured along the exterior wall of the foundation.
- 2) The driveway, and masonry porch and steps serving each Unit are part of the Unit.
- 3) Limited common elements are designated hereon as L.C.E.
- 4) General common elements are designated hereon as G.C.E.
- 5) Walkways, driveways, porches, and stoops are intended to be constructed in the areas shown on the approved site plan.

RECORDED	7/10/19
PLAT BOOK	ME252
PLAT NO.	26

CONDOMINIUM PLAT
SHEET 2 OF 6
**POTOMAC OVERLOOK
CONDOMINIUM VIII**
OXON HILL (12th) ELECTION DISTRICT
PRINCE GEORGE'S COUNTY, MARYLAND
SCALE 1" = 15' MAY, 2019



4300 Forbes Boulevard, Suite 230 Lanham, MD 20706 P.301.794.7555 F.301.794.7656
Engineering // Surveying // Planning // Environmental Sciences www.solteszco.com

P232910

MSA S1250-19958-2