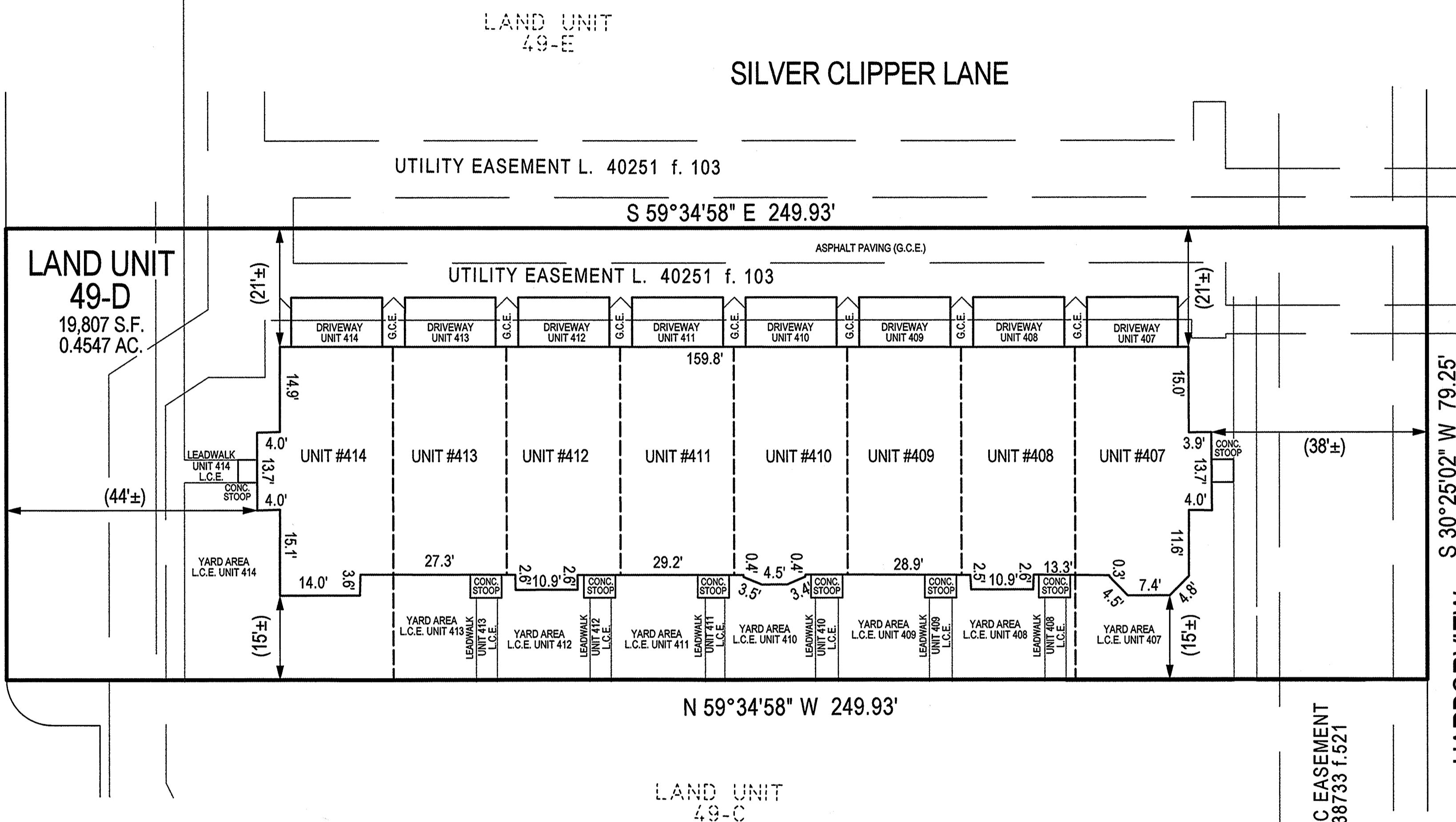


SCALE 1" = 30'
MD SET PLANE MD 27



NOTES

- 1) The dimensions given for the building shown hereon were measured along the exterior wall of the foundation.
- 2) The driveway, and masonry porch and steps serving each Unit are part of the Unit.
- 3) Limited common elements are designated hereon as L.C.E.
- 4) General common elements are designated hereon as G.C.E.
- 5) Walkways, driveways, porches, and stoops are intended to be constructed in the areas shown on the approved site plan.

RECORDED	12/10/2018
PLAT BOOK	ME251
PLAT NO.	28

FILED
DEC 10 2018
CLERK OF DISTRICT COURT
FOR PRINCE GEORGE'S COUNTY, MARYLAND

CONDOMINIUM PLAT
SHEET 2 OF 6
PHASE FIVE
POTOMAC OVERLOOK
CONDOMINIUM VIII
OXON HILL (12th) ELECTION DISTRICT
PRINCE GEORGE'S COUNTY, MARYLAND
SCALE 1" = 15' NOVEMBER, 2018



4300 Forbes Boulevard, Suite 230 Lanham, MD 20706 P.301.794.7555 F.301.794.7656
Engineering // Surveying // Planning // Environmental Sciences www.solteszco.com

P230 386

MSA 51250-19891-2