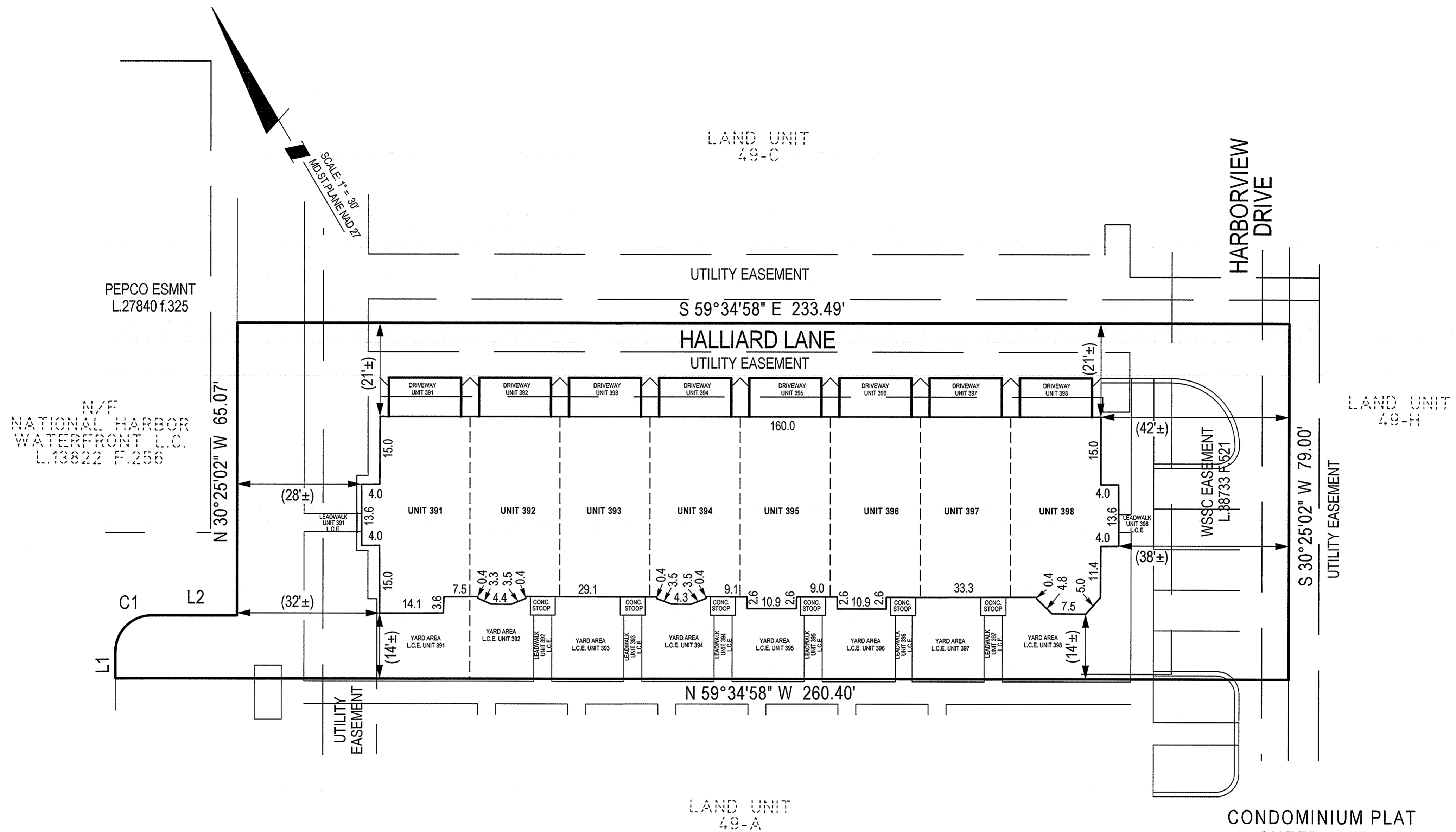


SJH248-31



LINE / CURVE TABLE

- L1 N 30°25'02" E 5.93'
- L2 S 59°34'58" E 18.91'
- C1 R=8.00' L=11.31' ARC=12.57'

FILED

SEP 22 2017

CLERK OF THE CIRCUIT COURT
FOR PRINCE GEORGE'S COUNTY, MD

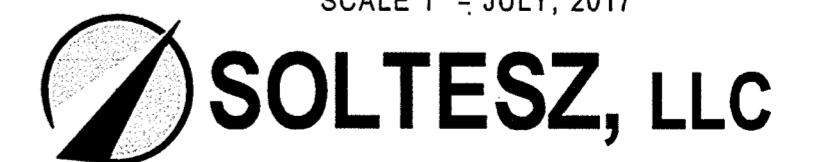
RECORDED 9-22-2017
PLAT BOOK SJH248
PLAT NO. 31

NOTES

- 1) The dimensions given for the building shown hereon were measured along the exterior wall of the foundation.
- 2) The driveway, and masonry porch and steps serving each Unit are part of the Unit.
- 3) Limited common elements are designated hereon as L.C.E.
- 4) General common elements are designated hereon as G.C.E.
- 5) Walkways, driveways, porches, and stoops are intended to be constructed in the areas shown on the approved site plan.

CONDOMINIUM PLAT
SHEET 2 OF 6
PHASE ONE
POTOMAC OVERLOOK
CONDOMINIUM VIII

OXON HILL (12th) ELECTION DISTRICT
PRINCE GEORGE'S COUNTY, MARYLAND
SCALE 1" = JULY, 2017



4300 Forbes Boulevard, Suite 230 Lanham, MD 20706 P.301.794.7555 F.301.794.7656
Engineering // Surveying // Planning // Environmental Sciences
www.solteszco.com

P223351

MSA 51250-19752-2