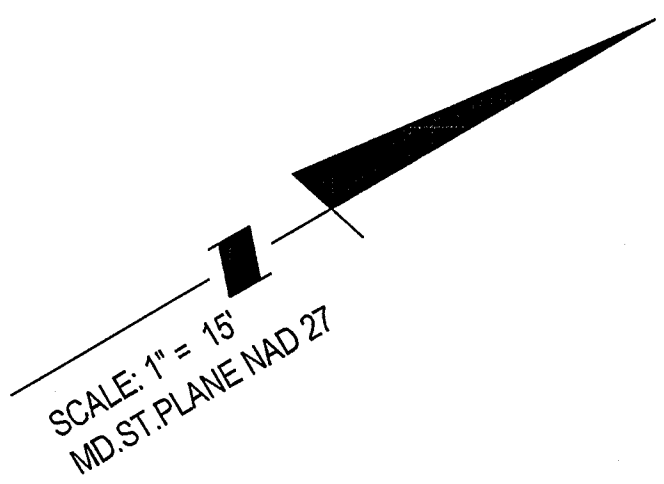
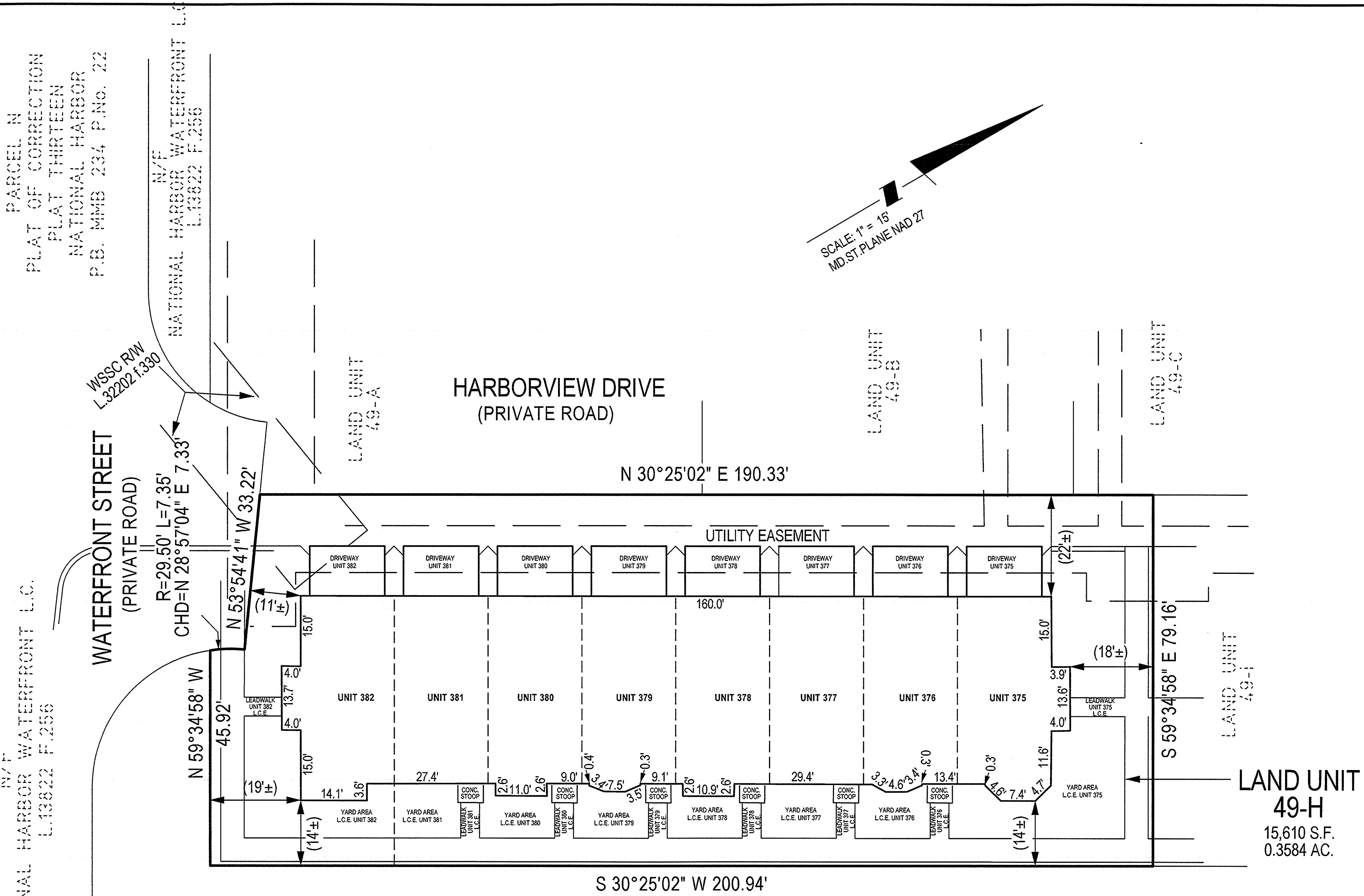
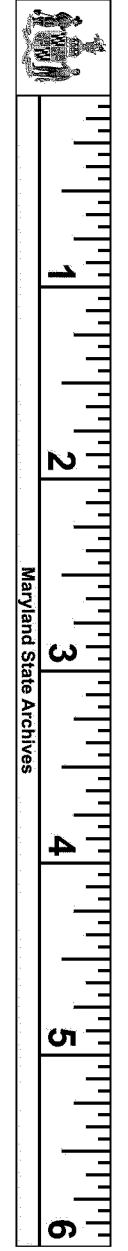


SJH248-86



FILED

DEC 22 2017

CLERK OF THE CIRCUIT COURT FOR PRINCE GEORGE'S COUNTY, MD

RECORDED 12-21-17 PLAT BOOK SJH248 PLAT NO. 86

NATIONAL HARBOR WATERFRONT L.C. L.13822 F.256

NOTES

- 1) The dimensions given for the building shown hereon were measured along the exterior wall of the foundation.
2) The driveway, and masonry porch and steps serving each Unit are part of the Unit.
3) Limited common elements are designated hereon as L.C.E.
4) General common elements are designated hereon as G.C.E.
5) Walkways, driveways, porches, and stoops are intended to be constructed in the areas shown on the approved site plan.

CONDOMINIUM PLAT SHEET 2 OF 6 PHASE TWO POTOMAC OVERLOOK CONDOMINIUM VIII OXON HILL (12th) ELECTION DISTRICT PRINCE GEORGE'S COUNTY, MARYLAND SCALE 1" = 15' NOVEMBER, 2017



4300 Forbes Boulevard, Suite 230 Lanham, MD 20706 P.301.794.7555 F.301.794.7656 Engineering // Surveying // Planning // Environmental Sciences www.solteszco.com

MSA 51250-19776-2

P225265

Vertical text on the right edge: S:\1006-01\Uplands\SURVEY\Plats\potomac-overlook-condo-VIII\phase-02-sheet-2.dgn Scale= 15.0000 ft / in. User= P\Quible P\Tdr= Black-White plotig Penrib= TEXT_SUB.tbl 12/1/2017 9:59:15 AM