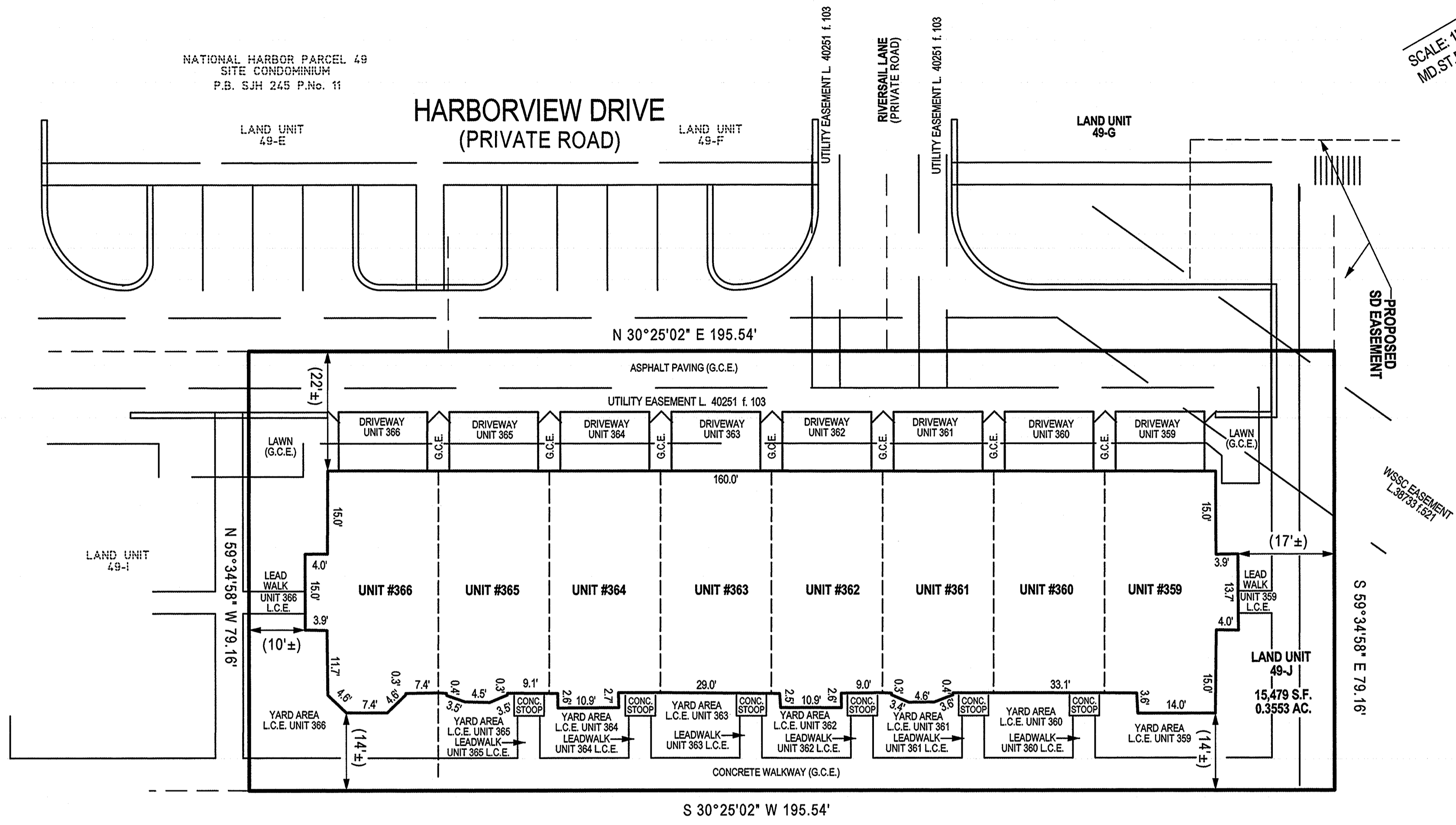


NATIONAL HARBOR PARCEL 49
SITE CONDOMINIUM
P.B. SJH 245 P.No. 11



N/F
NATIONAL HARBOR WATERFRONT L.C.
L.13622 F.256

FILED

OCT 07 2019

CLERK OF THE CIRCUIT COURT
FOR PRINCE GEORGE'S COUNTY, MD

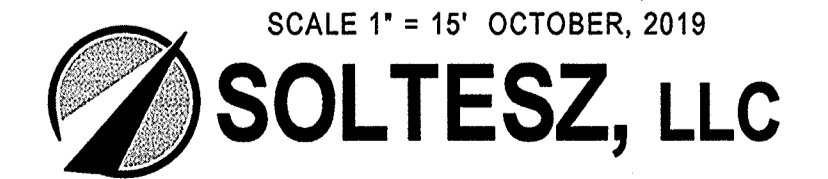
NOTES

- 1) The dimensions given for the building shown hereon were measured along the exterior wall of the foundation.
- 2) The driveway, and masonry porch and steps serving each Unit are part of the Unit.
- 3) Limited common elements are designated hereon as L.C.E.
- 4) General common elements are designated hereon as G.C.E.
- 5) Walkways, driveways, porches, and stoops are intended to be constructed in the areas shown on the approved site plan.

RECORDED	10-7-19
PLAT BOOK	ME-252
PLAT NO.	95

CONDOMINIUM PLAT
SHEET 2 OF 6
**PHASE NINE
POTOMAC OVERLOOK
CONDOMINIUM VIII**

OXON HILL (12th) ELECTION DISTRICT
PRINCE GEORGE'S COUNTY, MARYLAND
SCALE 1" = 15' OCTOBER, 2019



4300 Forbes Boulevard, Suite 230 Lanham, MD 20706 P.301.794.7555 F.301.794.7656
Engineering // Surveying // Planning // Environmental Sciences www.solteszco.com

P234165

MSA 51250-19989-2