

SJH241 83

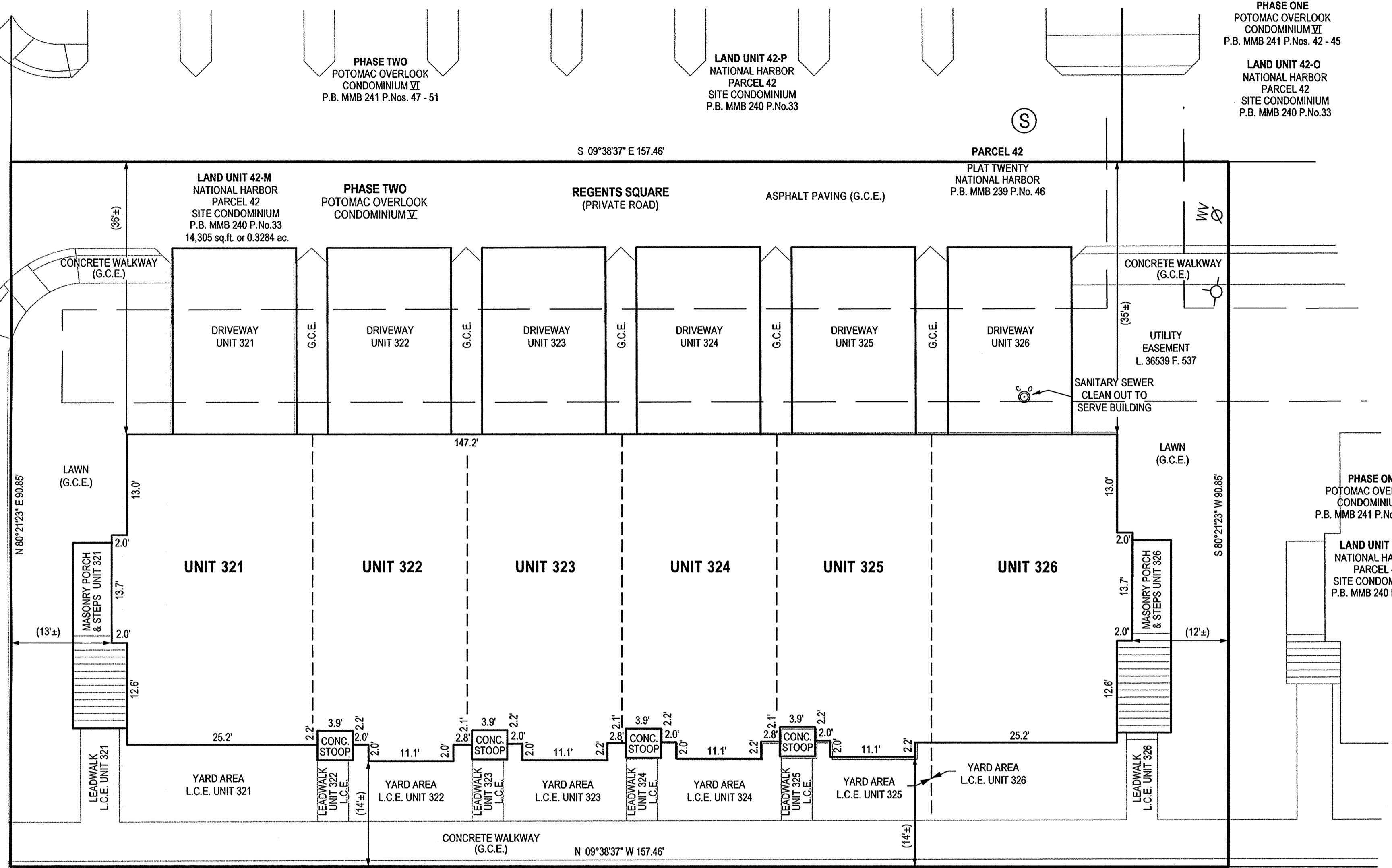


DATUM: MD STATE PLANE NAD 27 FT
SCALE: 1" = 15'

REGENTS SQUARE
(PRIVATE ROAD)

LAND UNIT 42-L
NATIONAL HARBOR
PARCEL 42
SITE CONDOMINIUM
P.B. MMB 240 P.No.33

WINDWARD WAY
(PRIVATE ROAD)



PHASE ONE
POTOMAC OVERLOOK
CONDOMINIUM III
P.B. MMB 241 P.Nos. 42 - 45

LAND UNIT 42-O
NATIONAL HARBOR
PARCEL 42
SITE CONDOMINIUM
P.B. MMB 240 P.No.33

PHASE ONE
POTOMAC OVERLOOK
CONDOMINIUM V
P.B. MMB 241 P.Nos. 37 - 40

LAND UNIT 42-N
NATIONAL HARBOR
PARCEL 42
SITE CONDOMINIUM
P.B. MMB 240 P.No.33

S 09°38'37" E 157.46'
PARCEL 42
PLAT TWENTY
NATIONAL HARBOR
P.B. MMB 239 P.No. 46

LAND UNIT 42-T
NATIONAL HARBOR
PARCEL 42
SITE CONDOMINIUM
P.B. MMB 240 P.No.33

NOTES

- 1) The dimensions given for the building shown hereon were measured along the exterior wall of the foundation.
- 2) The driveway and concrete stoop serving each Unit is part of the Unit.
- 3) Limited common elements are designated hereon as L.C.E.
- 4) General common elements are designated hereon as G.C.E.
- 5) Walkways, driveways, porches, and stoops are intended to be constructed in the areas shown on the approved site plan.

FILED

JAN 20 2015

CLERK OF THE CIRCUIT COURT
FOR PRINCE GEORGES COUNTY, MD.

CONDOMINIUM PLAT
SHEET 2 OF 5
**PHASE TWO
POTOMAC OVERLOOK
CONDOMINIUM V**

OXON HILL (12th) ELECTION DISTRICT
PRINCE GEORGE'S COUNTY, MARYLAND
SCALE 1" = 10' DECEMBER 2014



LANHAM OFFICE
4300 Forbes Boulevard, Suite 230 Lanham, MD 20706 P.301.794.7555 F.301.794.7656
Engineering Planning Environmental Sciences www.solteszco.com

RECORDED 1/20/15
PLAT BOOK SJH241
PLAT NO. 83

S:\1006-01\Plans\SURVEY\Plans\potomac-overlook-condo-v\phase-02-sheet-2.sht Scale= 10,0000 ft./in. User= FQuible PLT Drive= Grey;plotg Pentbl= TEXT_SUB.tbl 12/29/2014 7:20:41 AM

P208023 MSA C2381-19791-2