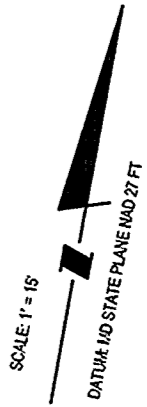
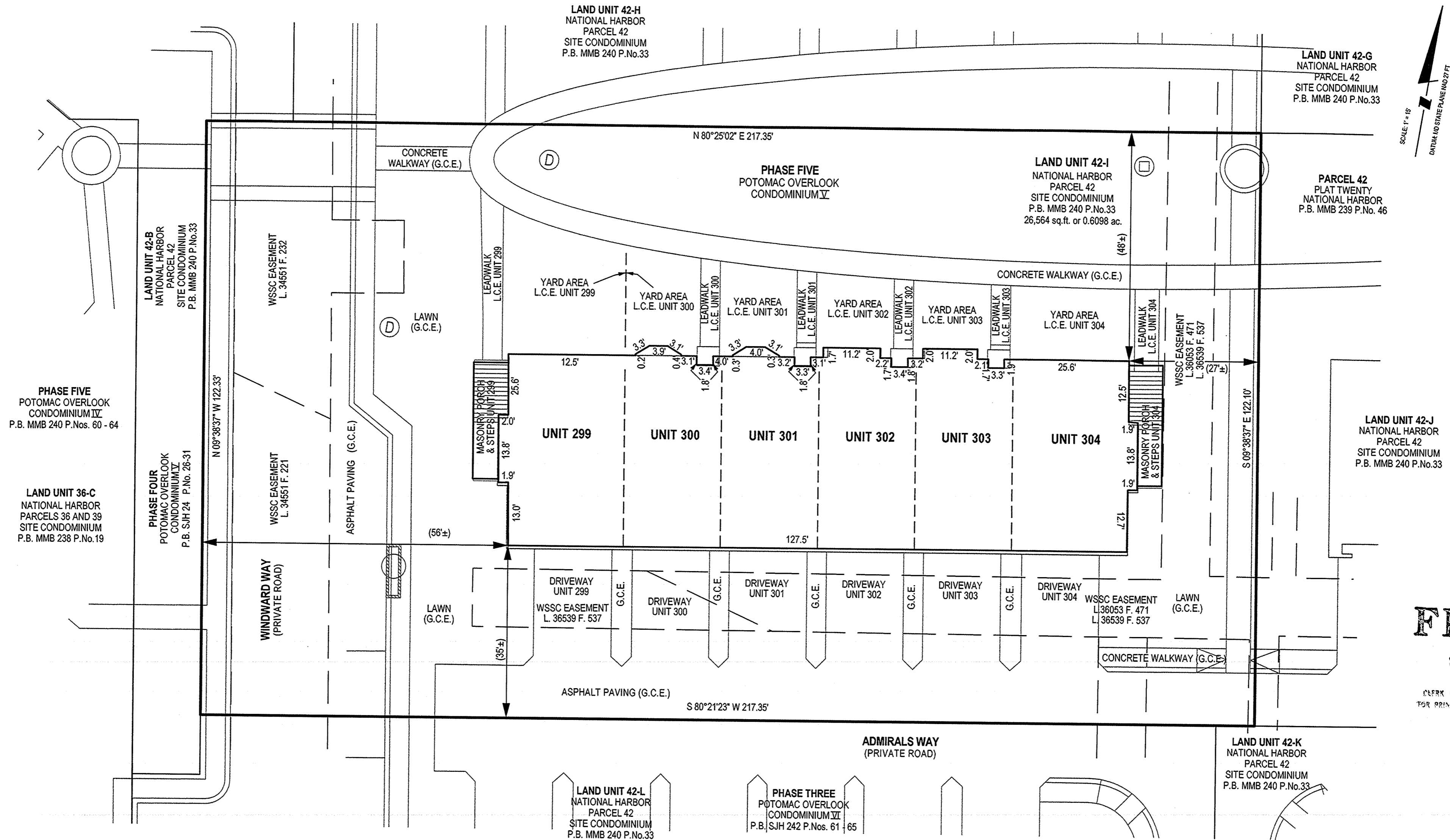


SJH243 40



FILED

SEP 23 2015

CLERK OF THE CIRCUIT COURT  
FOR PRINCE GEORGES COUNTY, MD.

CONDOMINIUM PLAT  
SHEET 2 OF 5  
**PHASE FIVE  
POTOMAC OVERLOOK  
CONDOMINIUM V**

OXON HILL (12th) ELECTION DISTRICT  
PRINCE GEORGE'S COUNTY, MARYLAND  
SCALE 1" = 15' SEPTEMBER 2015



LANHAM OFFICE  
4300 Forbes Boulevard, Suite 230 Lanham, MD 20706 P.301.794.7555 F.301.794.7656  
Engineering // Surveying // Planning // Environmental Sciences  
www.solteszco.com

NOTES

- 1) The dimensions given for the building shown hereon were measured along the exterior wall of the foundation.
- 2) The driveway and concrete stoop serving each Unit is part of the Unit.
- 3) Limited common elements are designated hereon as L.C.E.
- 4) General common elements are designated hereon as G.C.E.
- 5) Walkways, driveways, porches, and stoops are intended to be constructed in the areas shown on the approved site plan.

RECORDED 9/14/15  
PLAT BOOK SJH243  
PLAT NO. 40

P211828

MSA 51250 - 19416 - 2

03/06/08

S:\1006-01\plandis\SURVEY\Plat\potomac-overlook-condo-V\phase-05-sheet-2.sh Scale=15.0000 ft/in. User= Poulter PLT.Dwg= Grey.plt Dwg Penib= TEXT SUBJ= 09/10/2015 8:10:55 AM

PRINCE GEORGE'S COUNTY CIRCUIT COURT (Subdivision Plats, PG) Plat Book SJH 243, pp. 39-43, MSA\_51250\_19416. Date available 2015/09/14. Printed 02/01/2023.