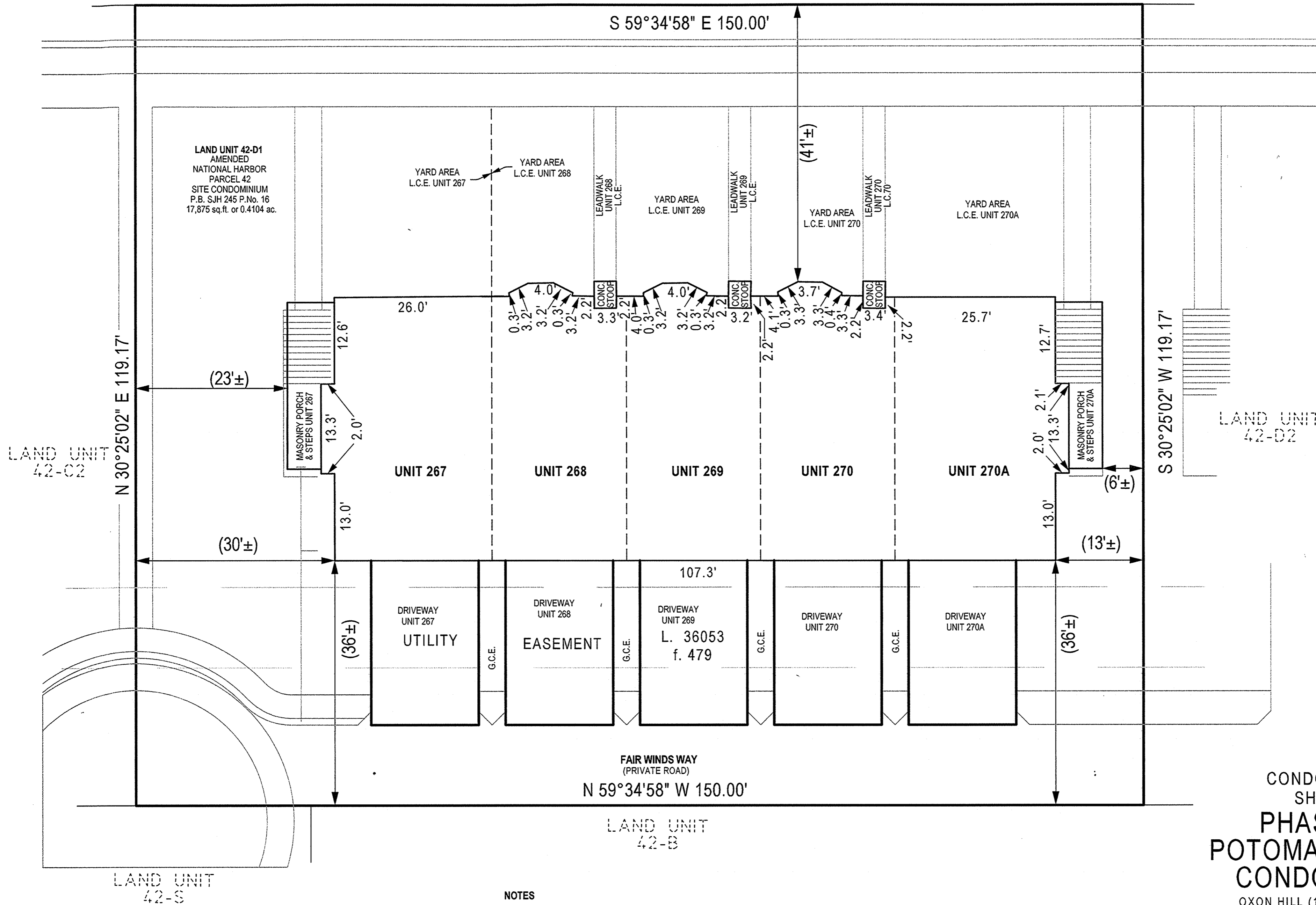
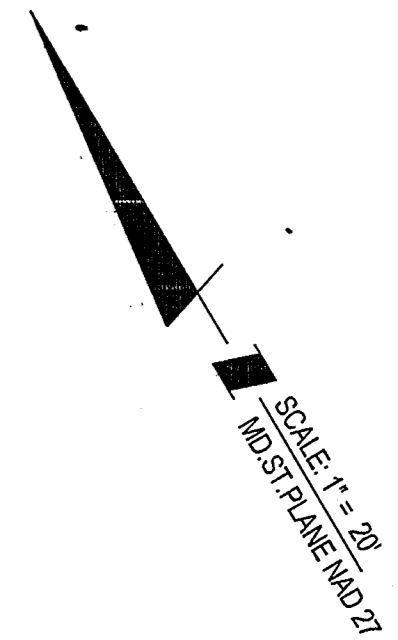


PARCEL 43
PLAT TWENTY
P.B. MMB 239 P.NO.46



NOTES

- 1) The dimensions given for the building shown hereon were measured along the exterior wall of the foundation.
- 2) The driveway, and masonry porch and steps serving each Unit are part of the Unit.
- 3) Limited common elements are designated hereon as L.C.E.
- 4) General common elements are designated hereon as G.C.E.
- 5) Walkways, driveways, porches, and stoops are intended to be constructed in the areas shown on the approved site plan.

FILED

JAN 12 2017

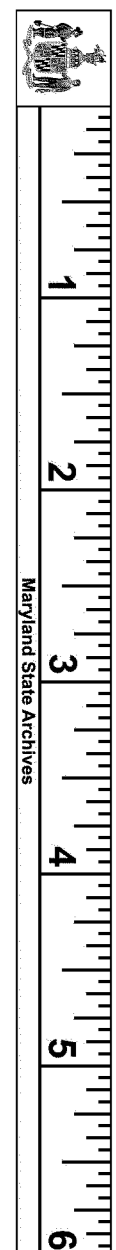
CLERK OF DISTRICT COURT
FOR PRINCE GEORGE'S COUNTY, MD

CONDOMINIUM PLAT
SHEET 2 OF 5
**PHASE THREE
POTOMAC OVERLOOK
CONDOMINIUM VII**

OXON HILL (12th) ELECTION DISTRICT
PRINCE GEORGE'S COUNTY, MARYLAND
SCALE 1" = 10' NOVEMBER 2016



4300 Forbes Boulevard, Suite 230 Lanham, MD 20706 P.301.794.7555 F.301.794.7656
Engineering // Surveying // Planning // Environmental Sciences www.solteszco.com



RECORDED 11/21/17
PLAT BOOK SJH246
PLAT NO. 43

P219653

MSA S1250-19622-2