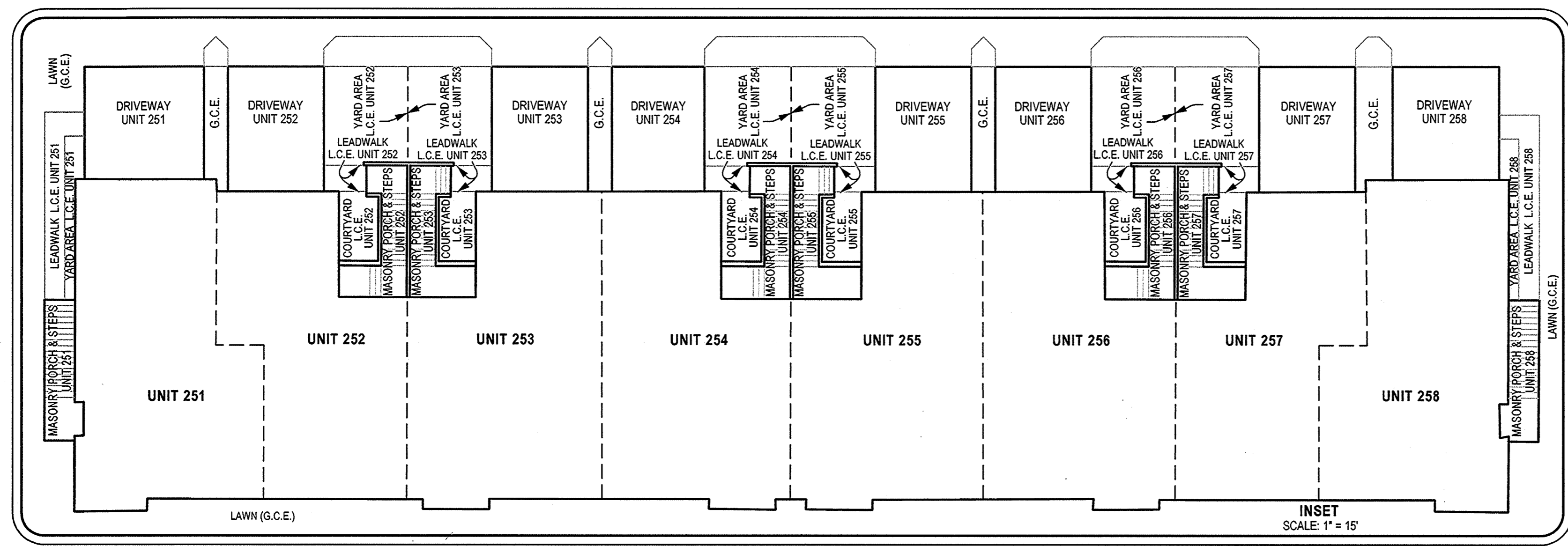
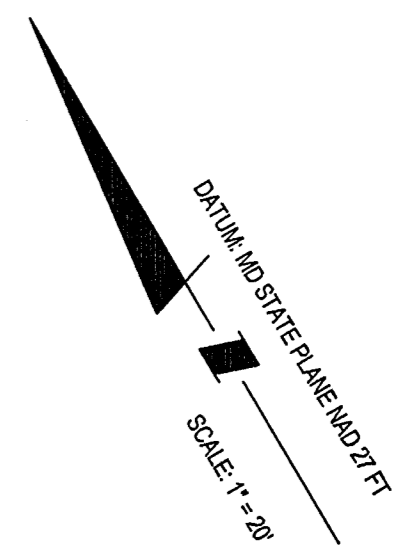
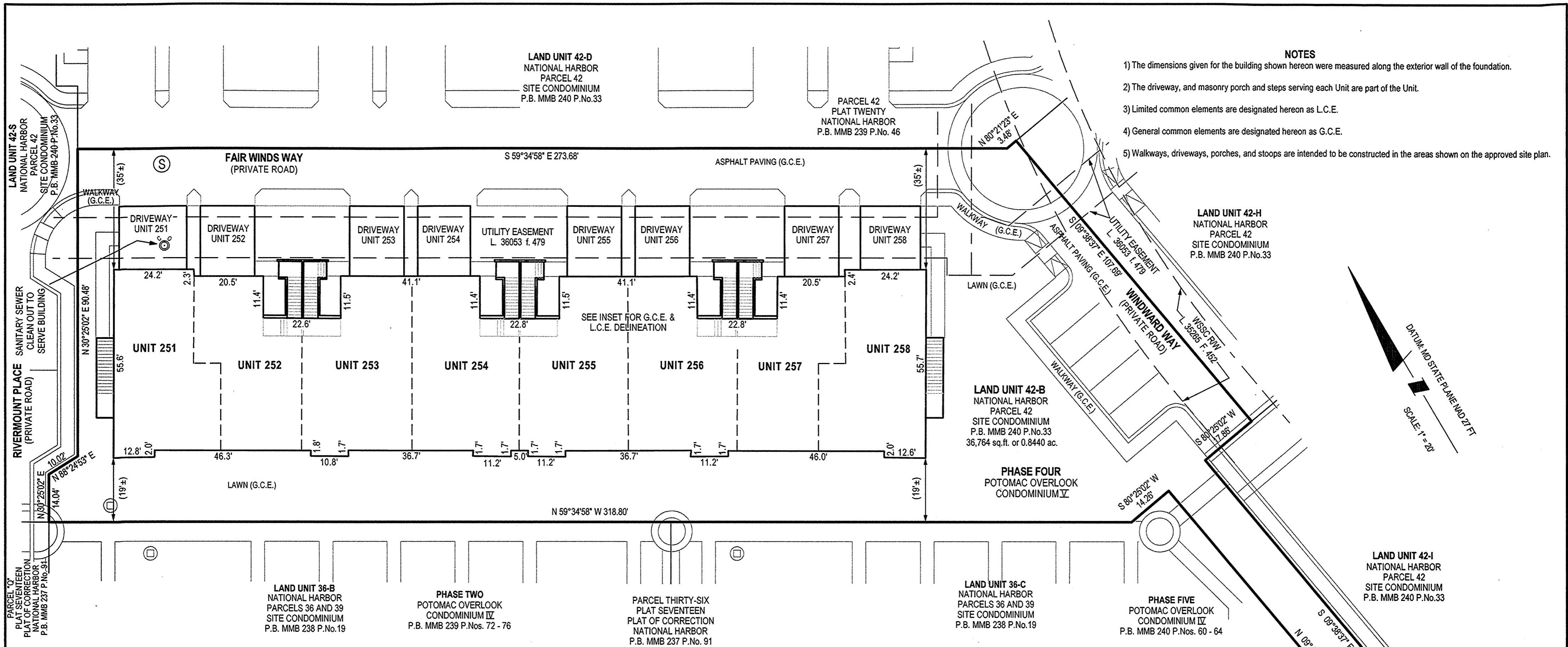


SJH 243 27

- NOTES**
- 1) The dimensions given for the building shown hereon were measured along the exterior wall of the foundation.
  - 2) The driveway, and masonry porch and steps serving each Unit are part of the Unit.
  - 3) Limited common elements are designated hereon as L.C.E.
  - 4) General common elements are designated hereon as G.C.E.
  - 5) Walkways, driveways, porches, and stoops are intended to be constructed in the areas shown on the approved site plan.



**FILED**

SEP 8 2015  
CLERK OF THE CIRCUIT COURT  
FOR PRINCE GEORGES COUNTY, MD.

**CONDOMINIUM PLAT  
SHEET 2 OF 6  
PHASE FOUR  
POTOMAC OVERLOOK  
CONDOMINIUM V**

OXON HILL (12th) ELECTION DISTRICT  
PRINCE GEORGE'S COUNTY, MARYLAND  
SCALE 1" = 20' JULY, 2015



LANHAM OFFICE  
4300 Forbes Boulevard, Suite 230 Lanham, MD 20706 P.301.794.7555 F.301.794.7656  
Engineering Planning Environmental Sciences www.solteszco.com

RECORDED 9/8/15  
PLAT BOOK SJH 243  
PLAT NO. 27

211610

MSA 51250-19413-2

PRINCE GEORGES COUNTY CIRCUIT COURT (Subdivision Plats, PG) Plat Book SJH 243, pp. 26-31, MSA\_51250\_19413. Date available 2015/09/08. Printed 02/01/2023.

03160107

S:\1006-01\Uplands\SURVEY\Plats\potomac-overlook-condo-V\phase-04-sheet2.shx Scale= 20:00000 ft./in. User= P:\cable PLTdrv= Color:plottng Pen:tbl= TEXT SUB:tbl 7/31/2015 11:09:40 AM