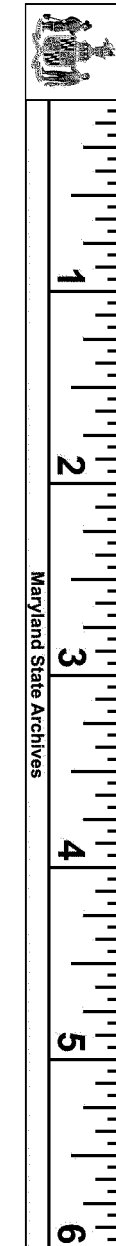
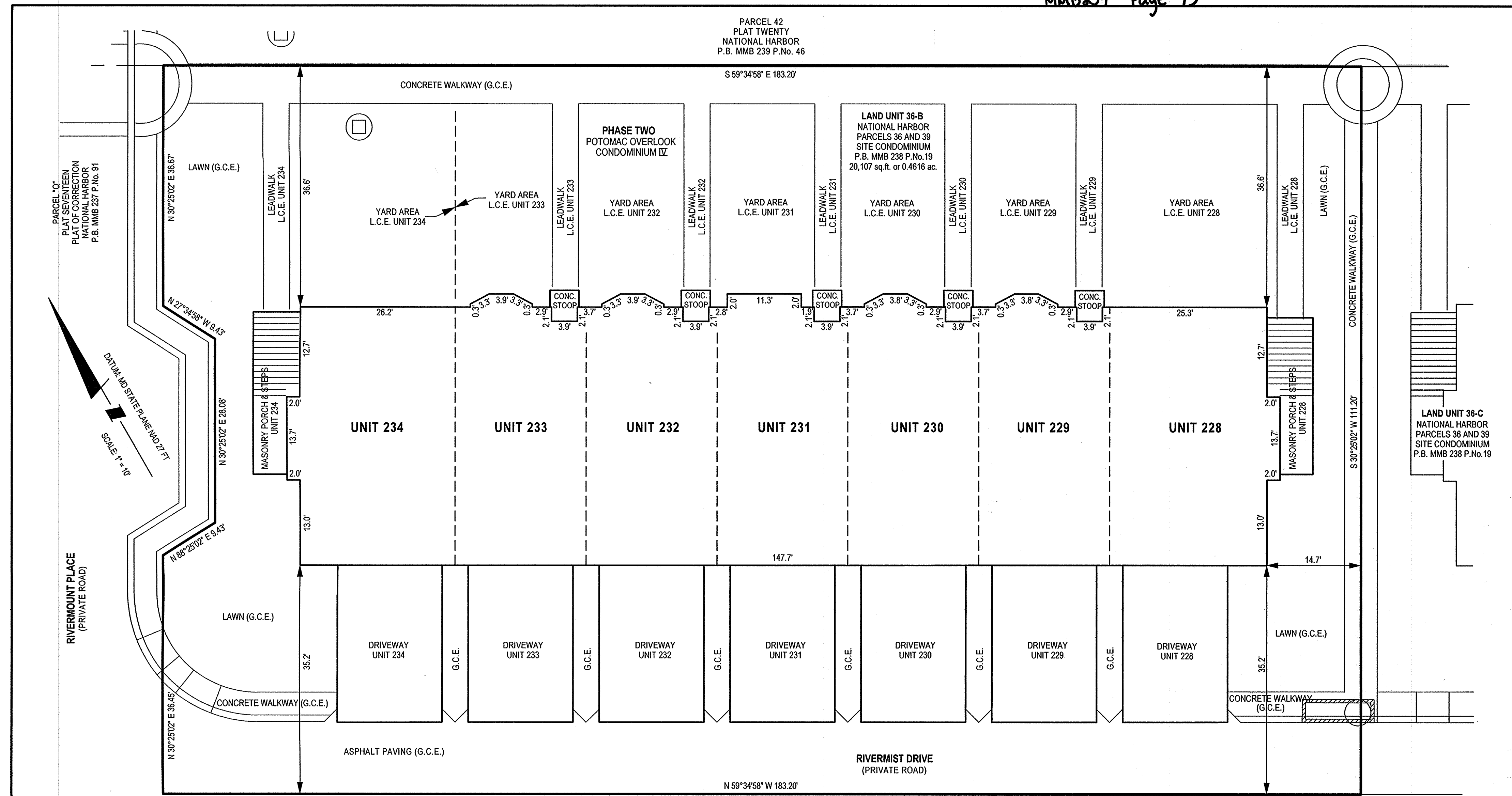


PARCEL 42
PLAT TWENTY
NATIONAL HARBOR
P.B. MMB 239 P.No. 46

S 59°34'58" E 183.20'



2/10/14

S:\1006-01\plans\SURVEY\Phase2\potomac-overlook-condo-1\phase-02-sheet-2.shx Scale=10.0000 ft/in. User=jsaulek PLTdrv=Special.pltctg Pentib=TEXT_SUB.tbl 1/3/2014 6:40:22 AM

LAND UNIT 36-A
NATIONAL HARBOR
PARCELS 36 AND 39
SITE CONDOMINIUM
P.B. MMB 238 P.No.19

PHASE ONE
POTOMAC OVERLOOK
CONDOMINIUM IV
P.B. MMB 239 P.Nos. 27 - 31

PARCEL THIRTY-SIX
PLAT SEVENTEEN
NATIONAL HARBOR
P.B. MMB 237 P.No. 91

LAND UNIT 36-D
NATIONAL HARBOR
PARCELS 36 AND 39
SITE CONDOMINIUM
P.B. MMB 238 P.No.19

- NOTES**
- 1) The dimensions given for the building shown hereon were measured along the exterior wall of the foundation.
 - 2) The driveway and concrete stoop or masonry porch serving each Unit is part of the Unit.
 - 3) Limited common elements are designated hereon as L.C.E.
 - 4) General common elements are designated hereon as G.C.E.
 - 5) Walkways, driveways, porches, and stoops are intended to be constructed in the areas shown on the approved site plan.

FILED
JAN 6 2014

CLERK OF THE CIRCUIT COURT
FOR PRINCE GEORGES COUNTY, MD.

CONDOMINIUM PLAT
SHEET 2 OF 5
**PHASE TWO
POTOMAC OVERLOOK
CONDOMINIUM IV**
OXON HILL (12th) ELECTION DISTRICT
PRINCE GEORGE'S COUNTY, MARYLAND
SCALE 1" = 10' DECEMBER 2013



LANHAM OFFICE
4300 Forbes Boulevard, Suite 230 Lanham, MD 20706 P.301.794.7555 F.301.794.7656
Engineering Planning Environmental Sciences www.solteszco.com

RECORDED	1/6/14
PLAT BOOK	MMB239
PLAT NO.	73