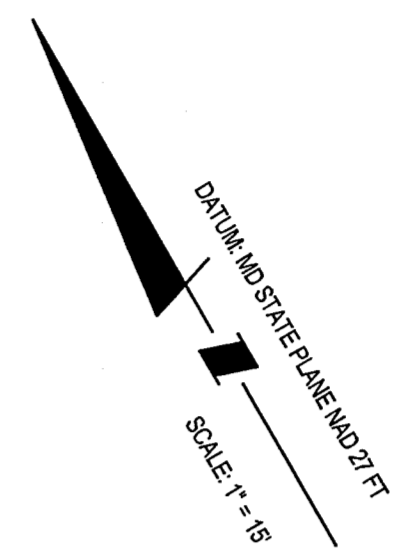
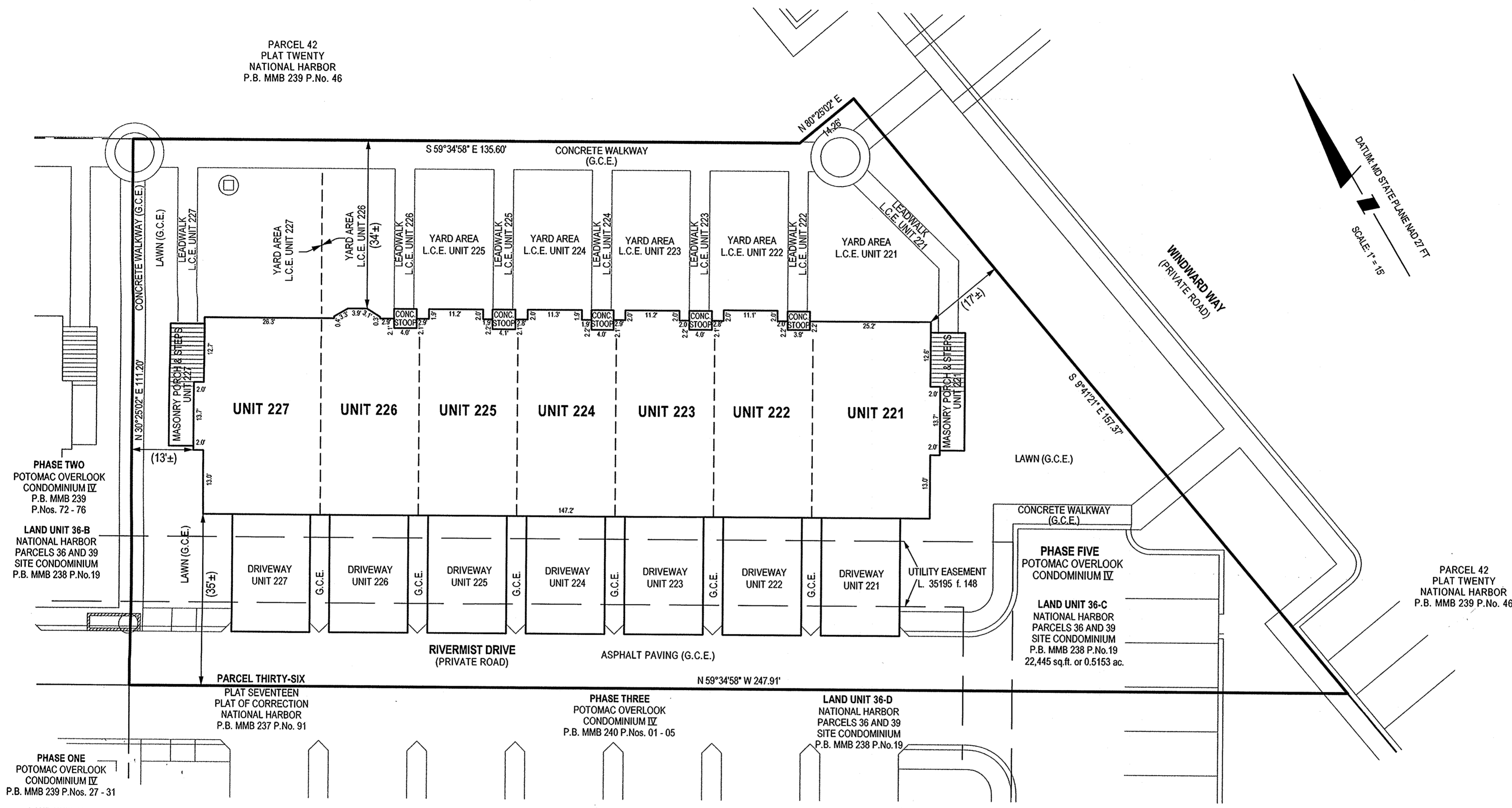


PARCEL 42  
PLAT TWENTY  
NATIONAL HARBOR  
P.B. MMB 239 P.No. 46



PHASE TWO  
POTOMAC OVERLOOK  
CONDOMINIUM IV  
P.B. MMB 239  
P.Nos. 72 - 76

LAND UNIT 36-B  
NATIONAL HARBOR  
PARCELS 36 AND 39  
SITE CONDOMINIUM  
P.B. MMB 238 P.No.19

PHASE ONE  
POTOMAC OVERLOOK  
CONDOMINIUM IV  
P.B. MMB 239 P.Nos. 27 - 31

LAND UNIT 36-A  
NATIONAL HARBOR  
PARCELS 36 AND 39  
SITE CONDOMINIUM  
P.B. MMB 238 P.No.19

**FILED**

JUN 17 2014

CLERK OF THE CIRCUIT COURT  
FOR PRINCE GEORGES COUNTY, MD.

PHASE THREE  
POTOMAC OVERLOOK  
CONDOMINIUM IV  
P.B. MMB 240 P.Nos. 01 - 05

LAND UNIT 36-D  
NATIONAL HARBOR  
PARCELS 36 AND 39  
SITE CONDOMINIUM  
P.B. MMB 238 P.No.19

PHASE FIVE  
POTOMAC OVERLOOK  
CONDOMINIUM IV  
  
LAND UNIT 36-C  
NATIONAL HARBOR  
PARCELS 36 AND 39  
SITE CONDOMINIUM  
P.B. MMB 238 P.No.19  
22,445 sq.ft. or 0.5153 ac.

PARCEL 42  
PLAT TWENTY  
NATIONAL HARBOR  
P.B. MMB 239 P.No. 46

- NOTES**
- 1) The dimensions given for the building shown hereon were measured along the exterior wall of the foundation.
  - 2) The driveway and concrete stoop or masonry porch serving each Unit is part of the Unit.
  - 3) Limited common elements are designated hereon as L.C.E.
  - 4) General common elements are designated hereon as G.C.E.
  - 5) Walkways, driveways, porches, and stoops are intended to be constructed in the areas shown on the approved site plan.

CONDOMINIUM PLAT  
SHEET 2 OF 5  
**PHASE FIVE  
POTOMAC OVERLOOK  
CONDOMINIUM IV**

OXON HILL (12th) ELECTION DISTRICT  
PRINCE GEORGE'S COUNTY, MARYLAND  
SCALE 1" = 15' JUNE 2014



LANHAM OFFICE  
4300 Forbes Boulevard, Suite 230 Lanham, MD 20706 P.301.794.7555 F.301.794.7656  
Engineering Planning Environmental Sciences www.solteszco.com

RECORDED 6/17/14  
PLAT BOOK MMB 240  
PLAT NO. 61



S:\1006-01\Uplands\SURVEY\Plats\potomac-overlook-condo-IV\phase-05-sheet-2.sh Scale= 15.0000 ft / in. User= jsaukel PLTdrv= Special.plt\pfig Pentble= TEXT\_SUB.tbl 6/12/2014 1:48:19 PM Maryland State Archives