

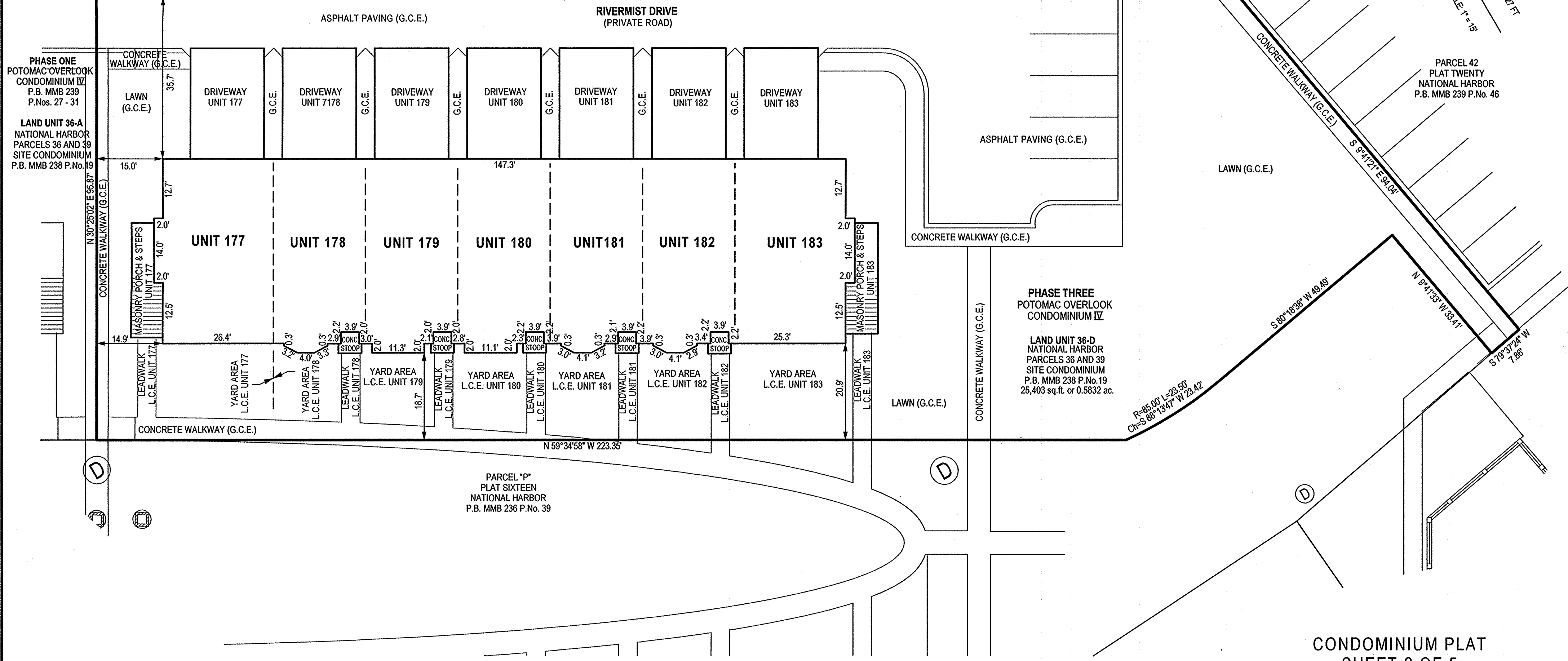
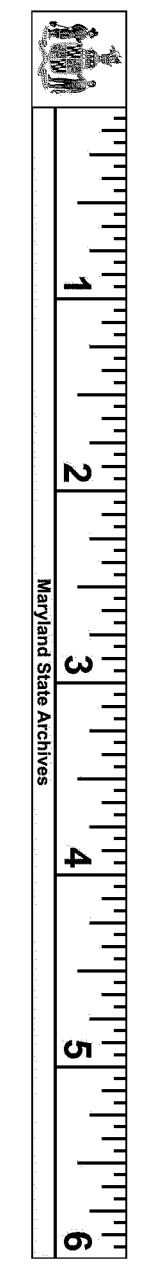
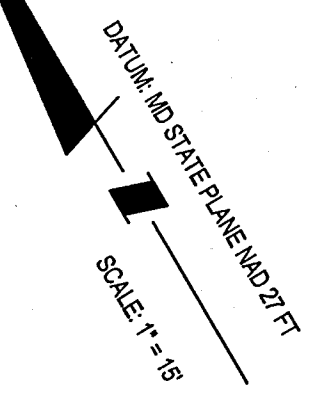
PHASE TWO  
POTOMAC OVERLOOK  
CONDOMINIUM IV  
P.B. MMB 239  
P.Nos. 72 - 76

PHASE ONE  
POTOMAC OVERLOOK  
CONDOMINIUM IV  
P.B. MMB 239  
P.Nos. 27 - 31

LAND UNIT 36-A  
NATIONAL HARBOR  
PARCELS 36 AND 39  
SITE CONDOMINIUM  
P.B. MMB 238 P.No.19

PARCEL THIRTY-SIX  
PLAT SEVENTEEN  
PLAT OF CORRECTION  
NATIONAL HARBOR  
P.B. MMB 237 P.No. 91

LAND UNIT 36-C  
NATIONAL HARBOR  
PARCELS 36 AND 39  
SITE CONDOMINIUM  
P.B. MMB 238 P.No.19



PHASE THREE  
POTOMAC OVERLOOK  
CONDOMINIUM IV  
LAND UNIT 36-D  
NATIONAL HARBOR  
PARCELS 36 AND 39  
SITE CONDOMINIUM  
P.B. MMB 238 P.No.19  
25,403 sq.ft. or 0.5832 ac.

CONDOMINIUM PLAT  
SHEET 2 OF 5  
**PHASE THREE  
POTOMAC OVERLOOK  
CONDOMINIUM IV**  
OXON HILL (12th) ELECTION DISTRICT  
PRINCE GEORGE'S COUNTY, MARYLAND  
SCALE 1" = 15' MARCH 2014



LANHAM OFFICE  
4300 Forbes Boulevard, Suite 230 Lanham, MD 20706 P.301.794.7555 F.301.794.7656  
Engineering Planning Environmental Sciences www.solteszco.com

NOTES

- 1) The dimensions given for the building shown hereon were measured along the exterior wall of the foundation.
- 2) The driveway and concrete stoop or masonry porch serving each Unit is part of the Unit.
- 3) Limited common elements are designated hereon as L.C.E.
- 4) General common elements are designated hereon as G.C.E.
- 5) Walkways, driveways, porches, and stoops are intended to be constructed in the areas shown on the approved site plan.

FILED  
MAR 12 2014  
CLERK OF THE CIRCUIT COURT  
FOR PRINCE GEORGE'S COUNTY, MD.

RECORDED 3/12/14  
PLAT BOOK MMB240  
PLAT NO. 02