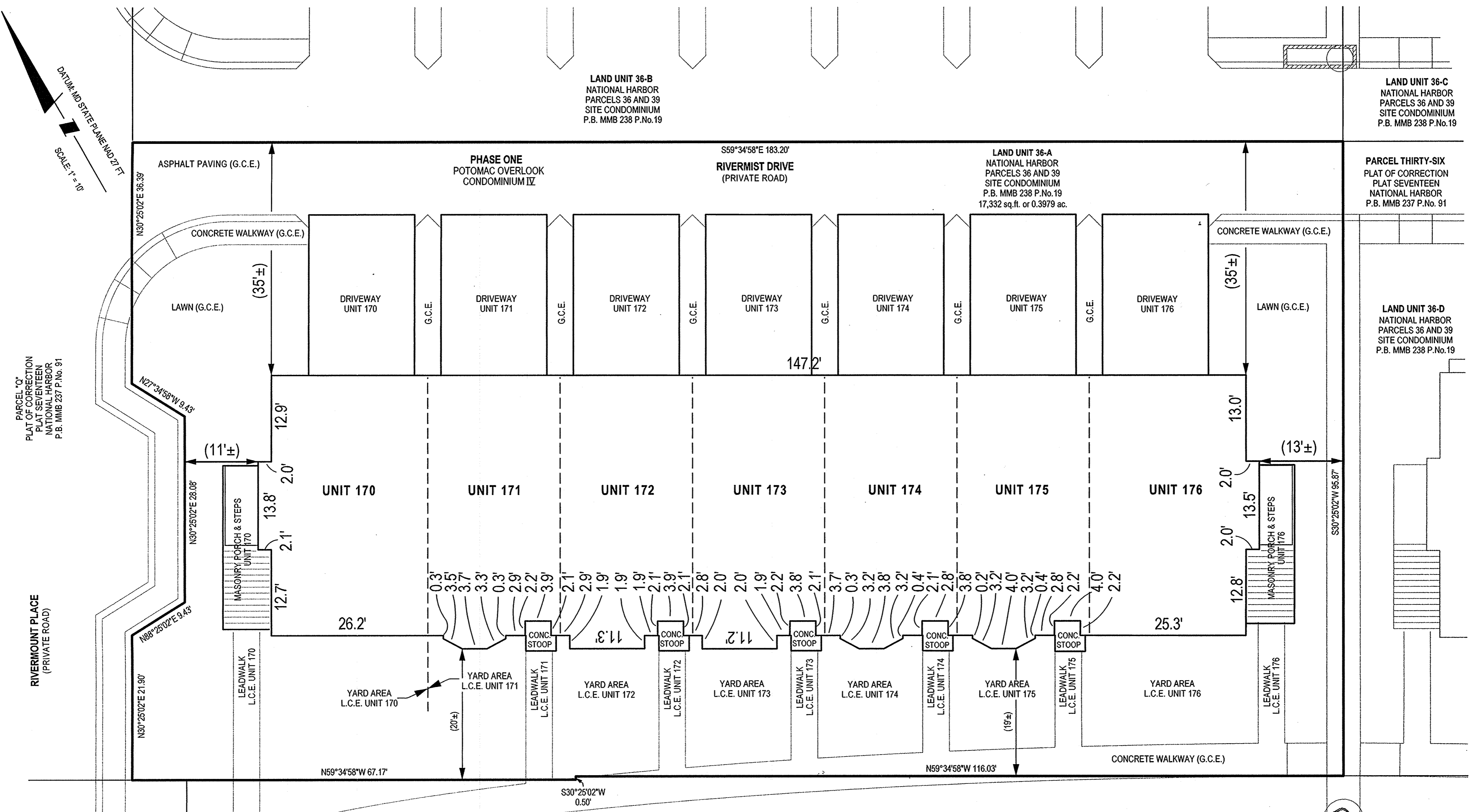
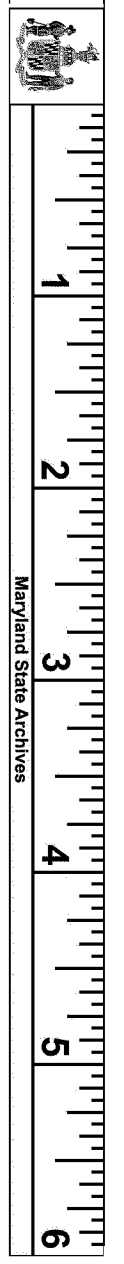


MMB 239-20



DATUM: MD STATE PLANE (ND 27 FT)  
SCALE: 1" = 10'

PARCEL "C"  
PLAT OF CORRECTION  
PLAT SEVENTEEN  
NATIONAL HARBOR  
P.B. MMB 237 P.No. 91

RIVERMOUNT PLACE  
(PRIVATE ROAD)

PARCEL "N"  
PLAT OF CORRECTION  
PLAT THIRTEEN  
NATIONAL HARBOR  
P.B. MMB 234 P.No. 22

LAND UNIT 36-B  
NATIONAL HARBOR  
PARCELS 36 AND 39  
SITE CONDOMINIUM  
P.B. MMB 238 P.No.19

LAND UNIT 36-C  
NATIONAL HARBOR  
PARCELS 36 AND 39  
SITE CONDOMINIUM  
P.B. MMB 238 P.No.19

PARCEL THIRTY-SIX  
PLAT OF CORRECTION  
PLAT SEVENTEEN  
NATIONAL HARBOR  
P.B. MMB 237 P.No. 91

LAND UNIT 36-D  
NATIONAL HARBOR  
PARCELS 36 AND 39  
SITE CONDOMINIUM  
P.B. MMB 238 P.No.19

PHASE ONE  
POTOMAC OVERLOOK  
CONDOMINIUM IV

RIVERMIST DRIVE  
(PRIVATE ROAD)

LAND UNIT 36-A  
NATIONAL HARBOR  
PARCELS 36 AND 39  
SITE CONDOMINIUM  
P.B. MMB 238 P.No.19  
17,332 sq.ft. or 0.3979 ac.

DRIVEWAY UNIT 170  
G.C.E.  
DRIVEWAY UNIT 171  
G.C.E.  
DRIVEWAY UNIT 172  
G.C.E.  
DRIVEWAY UNIT 173  
G.C.E.  
DRIVEWAY UNIT 174  
G.C.E.  
DRIVEWAY UNIT 175  
G.C.E.  
DRIVEWAY UNIT 176  
G.C.E.

UNIT 170  
UNIT 171  
UNIT 172  
UNIT 173  
UNIT 174  
UNIT 175  
UNIT 176

MASONRY PORCH & STEPS  
UNIT 170

MASONRY PORCH & STEPS  
UNIT 176

LEADWALK  
L.C.E. UNIT 170

YARD AREA  
L.C.E. UNIT 170

YARD AREA  
L.C.E. UNIT 171

YARD AREA  
L.C.E. UNIT 172

YARD AREA  
L.C.E. UNIT 173

YARD AREA  
L.C.E. UNIT 174

YARD AREA  
L.C.E. UNIT 175

YARD AREA  
L.C.E. UNIT 176

LEADWALK  
L.C.E. UNIT 176

CONC STOOP

CONC STOOP

CONC STOOP

CONC STOOP

CONC STOOP

CONC STOOP

- NOTES**
- 1) The dimensions given for the building shown hereon were measured along the exterior wall of the foundation.
  - 2) The driveway and concrete stoop or masonry porch serving each Unit is part of the Unit.
  - 3) Limited common elements are designated hereon as L.C.E.
  - 4) General common elements are designated hereon as G.C.E.
  - 5) Walkways, driveways, porches, and stoops are intended to be constructed in the areas shown on the approved site plan.

**FILED**

SEP 25 2013

CLERK OF THE CIRCUIT COURT  
FOR PRINCE GEORGES COUNTY, MD.

CONDOMINIUM PLAT  
SHEET 2 OF 5  
**PHASE ONE  
POTOMAC OVERLOOK  
CONDOMINIUM IV**

OXON HILL (12th) ELECTION DISTRICT  
PRINCE GEORGES COUNTY, MARYLAND  
SCALE 1" = 10' SEPTEMBER 2013



LANHAM OFFICE  
4300 Forbes Boulevard, Suite 230 Lanham, MD 20706 P.301.794.7555 F.301.794.7656  
Engineering Planning Environmental Sciences www.solteszco.com

RECORDED 9/25/13  
PLAT BOOK MMB 239  
PLAT NO. 28

p201878 MSA CU 2381 19583-2

PRINCE GEORGES COUNTY CIRCUIT COURT (Plat Book) Plat Book MMB 239, pp. 27-31, MSA\_C2381\_19583. Date available 2013/09/25. Printed 02/01/2023.

S:\1006-01\plands\SURVEY\Plats\potomac-overlook-condo-iv\phase-01-sheet-2.sht Scale=10.0000 ft./in. User=P\Quibbe PLTdrv=Color.plt\g PenTbl=TEXT\_SUB.tbl 9/23/2013 6:27:37 AM